



[Go to Product page](#)

Datasheet for ABIN562574  
**anti-RALGDS antibody (AA 793-902)**

2 Images

Overview

Quantity:	100 µg
Target:	RALGDS
Binding Specificity:	AA 793-902
Reactivity:	Human
Host:	Mouse
Clonality:	Monoclonal
Conjugate:	This RALGDS antibody is un-conjugated
Application:	ELISA, Proximity Ligation Assay (PLA)

Product Details

Purpose:	Mouse monoclonal antibody raised against a partial recombinant RALGDS.
Immunogen:	RALGDS (AAH59362, 793 a.a. ~ 902 a.a) partial recombinant protein with GST tag. MW of the GST tag alone is 26 KDa.
Sequence:	SLDVDNGNMY KSILVTSQDK APAVIRKAMD KHNLEEEPE DYELLQILSD DRCLKIPENA NVFYAMNSTA NYDFVLKKRT FTKGVKVKHG ASSTLPRMKQ KGLKIAKGIF
Clone:	1A11
Isotype:	IgG1
Cross-Reactivity:	Human
Characteristics:	Antibody Reactive Against Recombinant Protein.

## Target Details

Target:	RALGDS
Alternative Name:	RALGDS ( <a href="#">RALGDS Products</a> )
Background:	Full Gene Name: ral guanine nucleotide dissociation stimulator Synonyms: FLJ20922, RGF, RalGEF
Gene ID:	5900
Pathways:	<a href="#">Neurotrophin Signaling Pathway</a>

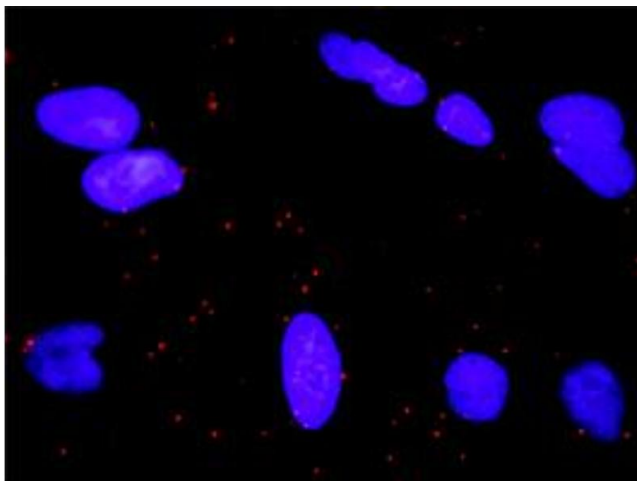
## Application Details

Application Notes:	Optimal working dilution should be determined by the investigator.
Restrictions:	For Research Use only

## Handling

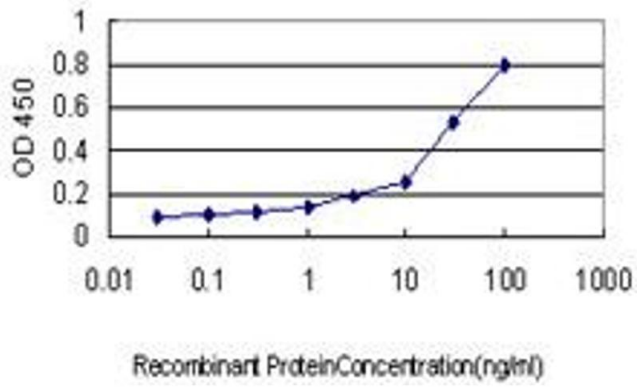
Buffer:	In 1x PBS, pH 7.4
Handling Advice:	Aliquot to avoid repeated freezing and thawing.
Storage:	-20 °C
Storage Comment:	Store at -20°C or lower. Aliquot to avoid repeated freezing and thawing.

## Images



### Proximity Ligation Assay

**Image 1.** Proximity Ligation Analysis of protein-protein interactions between MAPK3 and RALGDS. HeLa cells were stained with anti-MAPK3 rabbit purified polyclonal 1:1200 and anti-RALGDS mouse monoclonal antibody 1:50. Each red dot represents the detection of protein-protein interaction complex, and nuclei were counterstained with DAPI (blue).



## ELISA

**Image 2.** Detection limit for recombinant GST tagged RALGDS is approximately 0.1ng/ml as a capture antibody.