

Datasheet for ABIN562602  
**anti-p107 antibody (AA 905-1014)**

## 3 Images

[Go to Product page](#)

## Overview

Quantity:	100 µg
Target:	p107 (RBL1)
Binding Specificity:	AA 905-1014
Reactivity:	Human
Host:	Mouse
Clonality:	Monoclonal
Conjugate:	This p107 antibody is un-conjugated
Application:	Western Blotting (WB), ELISA, Proximity Ligation Assay (PLA)

## Product Details

Purpose:	Mouse monoclonal antibody raised against a partial recombinant RBL1.
Immunogen:	RBL1 (AAH32247, 905 a.a. ~ 1014 a.a) partial recombinant protein with GST tag. MW of the GST tag alone is 26 KDa.
Sequence:	IDCDLEDATK TPCSSGPVK EERGDLIKFY NTIYVGRVKS FALKYDLANQ DHMMDAPPLS PFPHIKQQPG SPRRISQQHS IYISPHKNGS GLTPRSALLY KFNGSPSKVR
Clone:	1A5
Isotype:	IgG1
Cross-Reactivity:	Human
Characteristics:	Antibody Reactive Against Recombinant Protein.

## Target Details

Target:	p107 (RBL1)
Alternative Name:	RBL1 ( <a href="#">RBL1 Products</a> )
Background:	Full Gene Name: retinoblastoma-like 1 (p107) Synonyms: CP107,MGC40006,PRB1,p107
Gene ID:	5933
Pathways:	<a href="#">Cell Division Cycle, Mitotic G1-G1/S Phases</a>

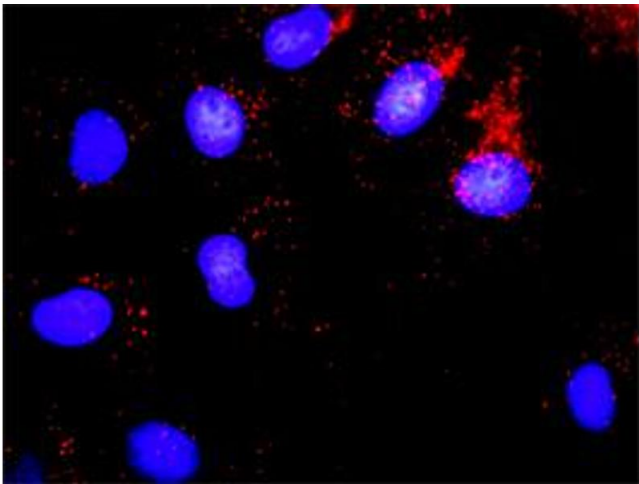
## Application Details

Application Notes:	Optimal working dilution should be determined by the investigator.
Restrictions:	For Research Use only

## Handling

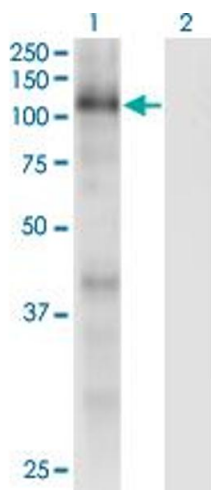
Buffer:	In 1x PBS, pH 7.4
Handling Advice:	Aliquot to avoid repeated freezing and thawing.
Storage:	-20 °C
Storage Comment:	Store at -20°C or lower. Aliquot to avoid repeated freezing and thawing.

## Images



### Proximity Ligation Assay

**Image 1.** Proximity Ligation Analysis of protein-protein interactions between MYBL2 and RBL1. Mahlavu cells were stained with anti-MYBL2 rabbit purified polyclonal 1:1200 and anti-RBL1 mouse monoclonal antibody 1:50. Each red dot represents the detection of protein-protein interaction complex, and nuclei were counterstained with DAPI (blue).

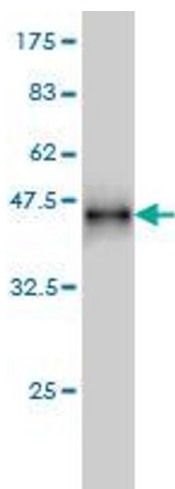


Western Blotting

**Image 2.** Western Blot analysis of RBL1 expression in transfected 293T cell line by RBL1 monoclonal antibody (M01), clone 1A5.

Lane 1: RBL1 transfected lysate (Predicted MW: 111.54 kDa).

Lane 2: Non-transfected lysate.



Western Blotting

**Image 3.** Western Blot detection against Immunogen (37.73 kDa) .