



[Go to Product page](#)

Datasheet for ABIN562619

anti-RDH5 antibody (AA 181-280)

1 Image

3 Publications

Overview

Quantity:	50 µL
Target:	RDH5
Binding Specificity:	AA 181-280
Reactivity:	Human
Host:	Mouse
Clonality:	Polyclonal
Conjugate:	This RDH5 antibody is un-conjugated
Application:	ELISA, Western Blotting (WB)

Product Details

Purpose:	Mouse polyclonal antibody raised against a partial recombinant RDH5.
Immunogen:	RDH5 (AAH28298, 181 a.a. ~ 280 a.a) partial recombinant protein with GST tag.
Sequence:	GLEAFSDSLR RDVAHFGIRV SIVEPGFFRT PVTNLESLEK TLQACWARLP PATQAHYGGGA FLTKYLKMQQ RIMNLICDPD LTKVSRCLEH ALTARHPRTR
Cross-Reactivity:	Human
Characteristics:	Antibody Reactive Against Recombinant Protein.

Target Details

Target:	RDH5
Alternative Name:	RDH5 (RDH5 Products)

Target Details

Background:	Full Gene Name: retinol dehydrogenase 5 (11-cis/9-cis) Synonyms: FLJ39337,FLJ97089,HSD17B9,RDH1,SDR9C5
Gene ID:	5959

Application Details

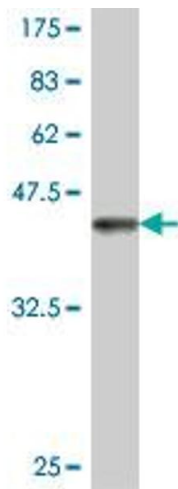
Application Notes:	Optimal working dilution should be determined by the investigator.
Restrictions:	For Research Use only

Handling

Format:	Liquid
Buffer:	50 % glycerol
Handling Advice:	Aliquot to avoid repeated freezing and thawing.
Storage:	-20 °C
Storage Comment:	Store at -20°C or lower. Aliquot to avoid repeated freezing and thawing.

Publications

Product cited in:	<p>Fokidis, Yieng Chin, Ho, Adomat, Soma, Fazli, Nip, Cox, Krystal, Zoubeidi, Tomlinson Guns: "A low carbohydrate, high protein diet suppresses intratumoral androgen synthesis and slows castration-resistant prostate tumor growth in mice." in: The Journal of steroid biochemistry and molecular biology, Vol. 150, pp. 35-45, (2015) (PubMed).</p> <p>Lubik, Gunter, Hendy, Locke, Adomat, Thompson, Herington, Gleave, Pollak, Nelson: "Insulin increases de novo steroidogenesis in prostate cancer cells." in: Cancer research, Vol. 71, Issue 17, pp. 5754-64, (2011) (PubMed).</p> <p>Locke, Guns, Lubik, Adomat, Hendy, Wood, Ettinger, Gleave, Nelson: "Androgen levels increase by intratumoral de novo steroidogenesis during progression of castration-resistant prostate cancer." in: Cancer research, Vol. 68, Issue 15, pp. 6407-15, (2008) (PubMed).</p>
-------------------	--



Western Blotting

Image 1. Western Blot detection against Immunogen (37 kDa) .