



[Go to Product page](#)

Datasheet for ABIN562632
anti-RFC1 antibody (AA 1-110)

2 Images

Overview

Quantity:	100 µg
Target:	RFC1
Binding Specificity:	AA 1-110
Reactivity:	Human
Host:	Mouse
Clonality:	Monoclonal
Conjugate:	This RFC1 antibody is un-conjugated
Application:	Western Blotting (WB), ELISA

Product Details

Purpose:	Mouse monoclonal antibody raised against a partial recombinant RFC1.
Immunogen:	RFC1 (AAH51786, 1 a.a. ~ 110 a.a) partial recombinant protein with GST tag. MW of the GST tag alone is 26 KDa.
Sequence:	MDIRKFFGVI PSGKKLVSET VKKNEKTKSD EETLKAKKGI KEIKVNSSRK EDDFKQKQPS KKKRIIYDSD SESEETLQVK NAKKPPEKLP VSSKPGKISR QDPVTYISET
Clone:	3F8
Isotype:	IgG3
Cross-Reactivity:	Human
Characteristics:	Antibody Reactive Against Recombinant Protein.

Target Details

Target:	RFC1
Alternative Name:	RFC1 (RFC1 Products)
Background:	Full Gene Name: replication factor C (activator 1) 1, 145 kDa Synonyms: A1,MGC51786,MHCBFB,PO-GA,RECC1,RFC,RFC140
Gene ID:	5981
Pathways:	Telomere Maintenance , DNA Damage Repair , DNA Replication , Synthesis of DNA , Dicarboxylic Acid Transport

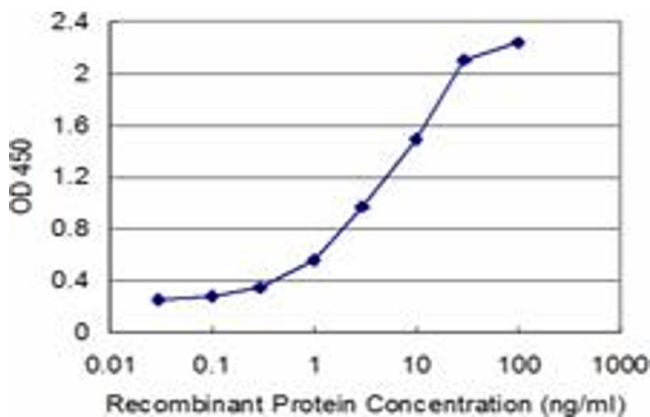
Application Details

Application Notes:	Optimal working dilution should be determined by the investigator.
Restrictions:	For Research Use only

Handling

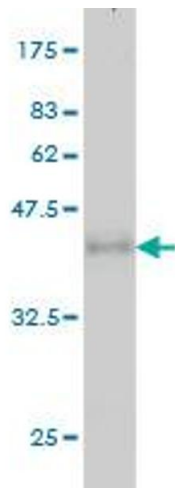
Buffer:	In 1x PBS, pH 7.4
Handling Advice:	Aliquot to avoid repeated freezing and thawing.
Storage:	-20 °C
Storage Comment:	Store at -20°C or lower. Aliquot to avoid repeated freezing and thawing.

Images



ELISA

Image 1. Detection limit for recombinant GST tagged RFC1 is approximately 0.3ng/ml as a capture antibody.



Western Blotting

Image 2. Western Blot detection against Immunogen (37.51 KDa).