



[Go to Product page](#)

Datasheet for ABIN562640
anti-RFX2 antibody (AA 323-429)

2 Images

Overview

Quantity:	50 µL
Target:	RFX2
Binding Specificity:	AA 323-429
Reactivity:	Human
Host:	Mouse
Clonality:	Polyclonal
Conjugate:	This RFX2 antibody is un-conjugated
Application:	ELISA, Western Blotting (WB)

Product Details

Purpose:	Mouse polyclonal antibody raised against a partial recombinant RFX2.
Immunogen:	RFX2 (NP_000626, 323 a.a. ~ 429 a.a) partial recombinant protein with GST tag.
Sequence:	PEQTMAVQSQ HHQQYIDVSH VFPEFPAPDL GSFLLQDGVT LHDVKALQLV YRRHCEATVD VVMNLQFHVI EKLWLSFWNS KASSSDGPTS LPASDEDPEG AVLPKDK
Cross-Reactivity:	Human
Characteristics:	Antibody Reactive Against Recombinant Protein.

Target Details

Target:	RFX2
Alternative Name:	RFX2 (RFX2 Products)

Target Details

Background:	Full Gene Name: regulatory factor X, 2 (influences HLA class II expression) Synonyms: FLJ14226
Gene ID:	5990
NCBI Accession:	NM_000635

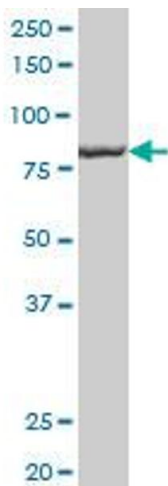
Application Details

Application Notes:	Optimal working dilution should be determined by the investigator.
Restrictions:	For Research Use only

Handling

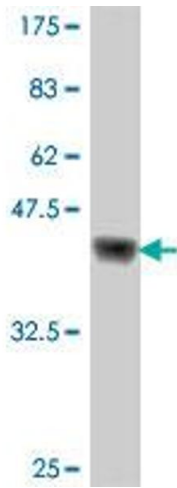
Format:	Liquid
Buffer:	50 % glycerol
Handling Advice:	Aliquot to avoid repeated freezing and thawing.
Storage:	-20 °C
Storage Comment:	Store at -20°C or lower. Aliquot to avoid repeated freezing and thawing.

Images



Western Blotting

Image 1. RFX2 polyclonal antibody (A01), Lot # 051004JC01 Western Blot analysis of RFX2 expression in HepG2 .



Western Blotting

Image 2. Western Blot detection against Immunogen (37.88 KDa).