



Datasheet for ABIN562647
anti-RGS10 antibody (AA 1-181)



[Go to Product page](#)

2 Images

Overview

Quantity:	100 µg
Target:	RGS10
Binding Specificity:	AA 1-181
Reactivity:	Human
Host:	Mouse
Clonality:	Monoclonal
Conjugate:	This RGS10 antibody is un-conjugated
Application:	ELISA

Product Details

Purpose:	Mouse monoclonal antibody raised against a full length recombinant RGS10.
Immunogen:	RGS10 (AAH09361, 1 a.a. ~ 181 a.a) full-length recombinant protein with GST tag. MW of the GST tag alone is 26 KDa.
Sequence:	MFNRAVSRLS RKRPPSDIHD SDGSSSSSHQ SLKSTAKWAA SLENLLEDPE GVKRFREFLK KEFSEENVLF WLACEDFKKM QDKTQMQEKA KEIYMTFLSS KASSQVNV EG QSRLNEKILE EPHPLMFQKL QDQIFNLMKY DSYSRFLKSD LFLKHKRTEE EEEDLPDAQT AAKRASRIYN T
Clone:	1G9-2D4
Isotype:	IgG1
Cross-Reactivity:	Human
Characteristics:	Antibody Reactive Against Recombinant Protein.

Target Details

Target:	RGS10
Alternative Name:	RGS10 (RGS10 Products)
Background:	Full Gene Name: regulator of G-protein signaling 10 Synonyms:
Gene ID:	6001
Pathways:	Myometrial Relaxation and Contraction , Regulation of G-Protein Coupled Receptor Protein Signaling

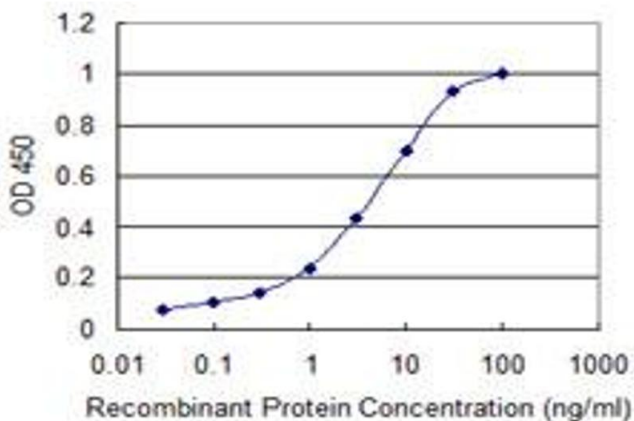
Application Details

Application Notes:	Optimal working dilution should be determined by the investigator.
Restrictions:	For Research Use only

Handling

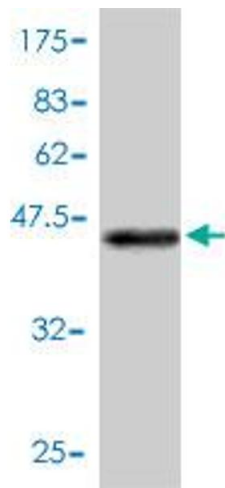
Buffer:	In 1x PBS, pH 7.4
Handling Advice:	Aliquot to avoid repeated freezing and thawing.
Storage:	-20 °C
Storage Comment:	Store at -20°C or lower. Aliquot to avoid repeated freezing and thawing.

Images



ELISA

Image 1. Detection limit for recombinant GST tagged RGS10 is 0.03 ng/ml as a capture antibody.



Western Blotting

Image 2. Western Blot detection against Immunogen (45.65 kDa).