



[Go to Product page](#)

Datasheet for ABIN562657
anti-RLBP1 antibody (AA 1-317)

2 Images

Overview

Quantity:	100 µg
Target:	RLBP1
Binding Specificity:	AA 1-317
Reactivity:	Human
Host:	Mouse
Clonality:	Monoclonal
Conjugate:	This RLBP1 antibody is un-conjugated
Application:	Western Blotting (WB), ELISA

Product Details

Purpose:	Mouse monoclonal antibody raised against a full length recombinant RLBP1.
Immunogen:	RLBP1 (AAH04199, 1 a.a. ~ 317 a.a) full-length recombinant protein with GST tag. MW of the GST tag alone is 26 KDa.
Sequence:	MSEGVGTFRM VP EEEQELRA QLEQLTTKDH GPVFGPCSQL PRHTLQKAKD ELNEREETRE EAVRELQEMV QAQAASGEEL AVAVAERVQE KDSGFFLRFI RARKFNVGRA YELLRGYVNF RLQYPELFDS LSPEAVRCTI EAGYPGV LSS RDKYGRVVML FN IENWQSQE ITFDEILQAY CFILEK LLEN EETQINGFCI IENFKGFTMQ QAASLR TSDL RKMVDMLQDS FPARFKAIHF IHQPWYFTTT YNVVKPFLKS KLLERVFVHG DDLSGFYQEI DENILPSDFG GTLPKYDGKA VAEQLFGPQA QAENTAF
Clone:	1H7
Isotype:	IgG2a

Product Details

Cross-Reactivity:	Human
Characteristics:	Antibody Reactive Against Recombinant Protein.

Target Details

Target:	RLBP1
Alternative Name:	RLBP1 (RLBP1 Products)
Background:	Full Gene Name: retinaldehyde binding protein 1 Synonyms: CRALBP,MGC3663
Gene ID:	6017

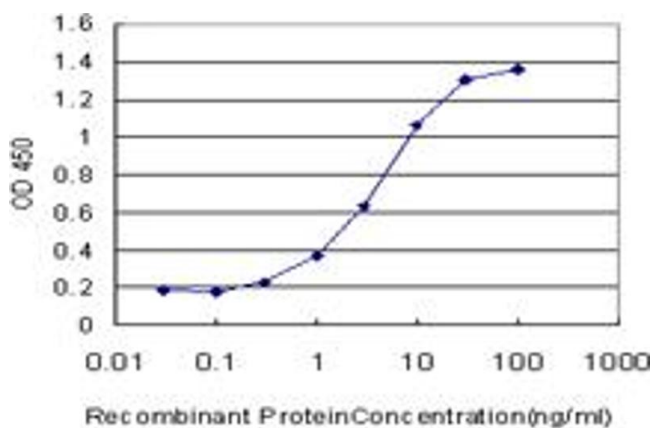
Application Details

Application Notes:	Optimal working dilution should be determined by the investigator.
Restrictions:	For Research Use only

Handling

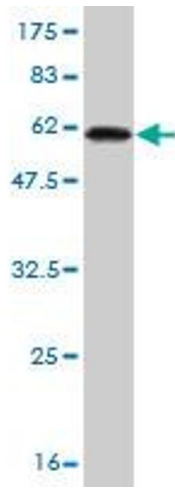
Buffer:	In 1x PBS, pH 7.4
Handling Advice:	Aliquot to avoid repeated freezing and thawing.
Storage:	-20 °C
Storage Comment:	Store at -20°C or lower. Aliquot to avoid repeated freezing and thawing.

Images



ELISA

Image 1. Detection limit for recombinant GST tagged RLBP1 is approximately 0.3ng/ml as a capture antibody.



Western Blotting

Image 2. Western Blot detection against Immunogen (60.61 kDa).