



[Go to Product page](#)

Datasheet for ABIN562659

anti-RNASE2 antibody (AA 86-161)

1 Image

1 Publication

Overview

Quantity:	50 µL
Target:	RNASE2
Binding Specificity:	AA 86-161
Reactivity:	Human
Host:	Mouse
Clonality:	Polyclonal
Conjugate:	This RNASE2 antibody is un-conjugated
Application:	Western Blotting (WB), ELISA

Product Details

Purpose:	Mouse polyclonal antibody raised against a partial recombinant RNASE2.
Immunogen:	RNASE2 (NP_002925, 86 a.a. ~ 161 a.a) partial recombinant protein with GST tag.
Sequence:	NMTCPSNKTR KNCHHSGSQV PLIHCNLTTP SPQNISNCRY AQTPANMFYI VACDNRDQRR DPPQYPVVPV HLDRII
Cross-Reactivity:	Human
Characteristics:	Antibody Reactive Against Recombinant Protein.

Target Details

Target:	RNASE2
Alternative Name:	RNASE2 (RNASE2 Products)

Target Details

Background:	Full Gene Name: ribonuclease, RNase A family, 2 (liver, eosinophil-derived neurotoxin) Synonyms: EDN,RNS2
Gene ID:	6036
NCBI Accession:	NM_002934

Application Details

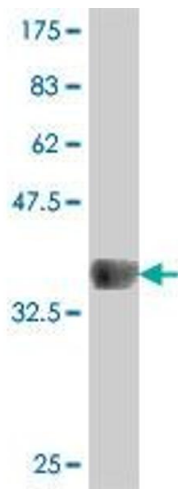
Application Notes:	Optimal working dilution should be determined by the investigator.
Restrictions:	For Research Use only

Handling

Format:	Liquid
Buffer:	50 % glycerol
Handling Advice:	Aliquot to avoid repeated freezing and thawing.
Storage:	-20 °C
Storage Comment:	Store at -20°C or lower. Aliquot to avoid repeated freezing and thawing.

Publications

Product cited in:	Thongboonkerd, Semangoen, Chutipongtanate: "Enrichment of the basic/cationic urinary proteome using ion exchange chromatography and batch adsorption." in: Journal of proteome research , Vol. 6, Issue 3, pp. 1209-14, (2007) (PubMed).
-------------------	---



Western Blotting

Image 1. Western Blot detection against Immunogen (34.47 kDa) .