



[Go to Product page](#)

Datasheet for ABIN562673

anti-ROM1 antibody (AA 163-264)

1 Image

Overview

Quantity:	50 µL
Target:	ROM1
Binding Specificity:	AA 163-264
Reactivity:	Human
Host:	Mouse
Clonality:	Polyclonal
Conjugate:	This ROM1 antibody is un-conjugated
Application:	Western Blotting (WB), ELISA

Product Details

Purpose:	Mouse polyclonal antibody raised against a partial recombinant ROM1.
Immunogen:	ROM1 (NP_000318, 163 a.a. ~ 264 a.a) partial recombinant protein with GST tag.
Sequence:	QLRYHCCGRH GYKDWFGVQW VSSRYLDPGD RDVADRIQRN VEGLYLTDGV PFSCCNPHSP RPCLQNRLSD SYAHPLFDPR QPNQNLWAQG CHEVLLEHLQ DL
Cross-Reactivity:	Human
Characteristics:	Antibody Reactive Against Recombinant Protein.

Target Details

Target:	ROM1
Alternative Name:	ROM1 (ROM1 Products)

Target Details

Background:	Full Gene Name: retinal outer segment membrane protein 1 Synonyms: ROM,ROSP1,TSPAN23
Gene ID:	6094
NCBI Accession:	NM_000327

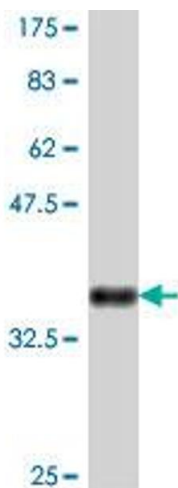
Application Details

Application Notes:	Optimal working dilution should be determined by the investigator.
Restrictions:	For Research Use only

Handling

Format:	Liquid
Buffer:	50 % glycerol
Handling Advice:	Aliquot to avoid repeated freezing and thawing.
Storage:	-20 °C
Storage Comment:	Store at -20°C or lower. Aliquot to avoid repeated freezing and thawing.

Images



Western Blotting

Image 1. Western Blot detection against Immunogen (37.33 KDa) .