



[Go to Product page](#)

Datasheet for ABIN562693
anti-RPL10 antibody (AA 1-100)

1 Image

Overview

Quantity:	100 µg
Target:	RPL10
Binding Specificity:	AA 1-100
Reactivity:	Human
Host:	Mouse
Clonality:	Monoclonal
Conjugate:	This RPL10 antibody is un-conjugated
Application:	ELISA

Product Details

Purpose:	Mouse monoclonal antibody raised against a partial recombinant RPL10.
Immunogen:	RPL10 (NP_006004, 1 a.a. ~ 100 a.a) partial recombinant protein with GST tag. MW of the GST tag alone is 26 KDa.
Sequence:	MGRRPARCYR YCKNKYPYKRS RFCRGVPDAK IRIFDLGRKK AKVDEFPLCG HMVSDEYEQL SSEALEAARI CANKYMKVSC GKDG FHIRVR LHPFHVIRIN
Clone:	3H7
Isotype:	IgG2b
Cross-Reactivity:	Human
Characteristics:	Antibody Reactive Against Recombinant Protein.

Target Details

Target:	RPL10
Alternative Name:	RPL10 (RPL10 Products)
Background:	Full Gene Name: ribosomal protein L10 Synonyms: DKFZp686J1851,DXS648,DXS648E,FLJ23544,FLJ27072,NOV,QM
Gene ID:	6134
NCBI Accession:	NM_006013

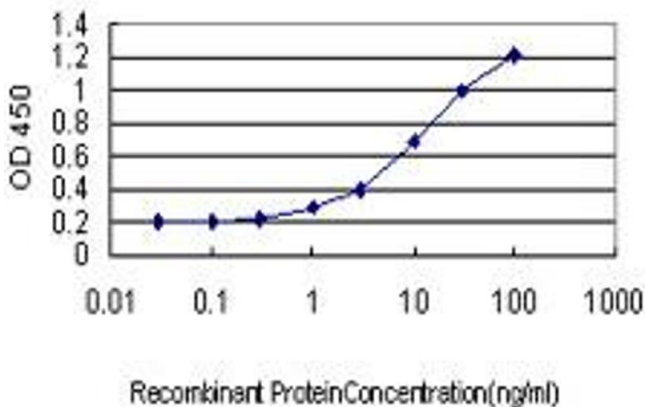
Application Details

Application Notes:	Optimal working dilution should be determined by the investigator.
Restrictions:	For Research Use only

Handling

Buffer:	In 1x PBS, pH 7.4
Handling Advice:	Aliquot to avoid repeated freezing and thawing.
Storage:	-20 °C
Storage Comment:	Store at -20°C or lower. Aliquot to avoid repeated freezing and thawing.

Images



ELISA

Image 1. Detection limit for recombinant GST tagged RPL10 is approximately 0.3ng/ml as a capture antibody.