



[Go to Product page](#)

Datasheet for ABIN562706
anti-RPL37 antibody (AA 1-97)

1 Image

Overview

Quantity:	50 µL
Target:	RPL37
Binding Specificity:	AA 1-97
Reactivity:	Human
Host:	Mouse
Clonality:	Polyclonal
Conjugate:	This RPL37 antibody is un-conjugated
Application:	Western Blotting (WB), ELISA

Product Details

Purpose:	Mouse polyclonal antibody raised against a partial recombinant RPL37.
Immunogen:	RPL37 (NP_000988, 1 a.a. ~ 97 a.a) partial recombinant protein with GST tag.
Sequence:	MTKGTSSF GK RRNKHTHTLCR RCGSKAYHLQ KSTCGKCGYP AKRKRKYNWS AKAKRRNTTG TGRMRHLKIV YRRFRHGFRE GTTPKPKRAA VAASSSS
Cross-Reactivity:	Human
Characteristics:	Antibody Reactive Against Recombinant Protein.

Target Details

Target:	RPL37
Alternative Name:	RPL37 (RPL37 Products)

Target Details

Background:	Full Gene Name: ribosomal protein L37 Synonyms: DKFZp686G1699,MGC99572
Gene ID:	6167
NCBI Accession:	NM_000997

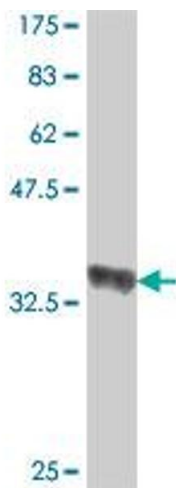
Application Details

Application Notes:	Optimal working dilution should be determined by the investigator.
Restrictions:	For Research Use only

Handling

Format:	Liquid
Buffer:	50 % glycerol
Handling Advice:	Aliquot to avoid repeated freezing and thawing.
Storage:	-20 °C
Storage Comment:	Store at -20°C or lower. Aliquot to avoid repeated freezing and thawing.

Images



Western Blotting

Image 1. Western Blot detection against Immunogen (36.78 KDa) .