



[Go to Product page](#)

Datasheet for ABIN562708  
**anti-RPL39 antibody (AA 1-51)**

1 Image

Overview

Quantity:	50 µL
Target:	RPL39
Binding Specificity:	AA 1-51
Reactivity:	Human
Host:	Mouse
Clonality:	Polyclonal
Conjugate:	This RPL39 antibody is un-conjugated
Application:	Western Blotting (WB), ELISA

Product Details

Purpose:	Mouse polyclonal antibody raised against a partial recombinant RPL39.
Immunogen:	RPL39 (NP_000991, 1 a.a. ~ 51 a.a) partial recombinant protein with GST tag.
Sequence:	MSSHKTFRIK RFLAKKQKQN RPIPQWIRMK TGNKIRYNSK RRHWRRTKLG L
Cross-Reactivity:	Human
Characteristics:	Antibody Reactive Against Recombinant Protein.

Target Details

Target:	RPL39
Alternative Name:	RPL39 ( <a href="#">RPL39 Products</a> )
Background:	Full Gene Name: ribosomal protein L39

## Target Details

Synonyms:

Gene ID: 6170

NCBI Accession: [NM\\_001000](#)

## Application Details

Application Notes: Optimal working dilution should be determined by the investigator.

Restrictions: For Research Use only

## Handling

Format: Liquid

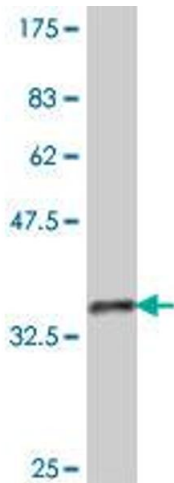
Buffer: 50 % glycerol

Handling Advice: Aliquot to avoid repeated freezing and thawing.

Storage: -20 °C

Storage Comment: Store at -20°C or lower. Aliquot to avoid repeated freezing and thawing.

## Images



### Western Blotting

**Image 1.** Western Blot detection against Immunogen (31.72 kDa).