



[Go to Product page](#)

Datasheet for ABIN562743
anti-RRM2 antibody (AA 1-110)

1 Image

Overview

Quantity:	50 µL
Target:	RRM2
Binding Specificity:	AA 1-110
Reactivity:	Human
Host:	Mouse
Clonality:	Polyclonal
Conjugate:	This RRM2 antibody is un-conjugated
Application:	Western Blotting (WB), ELISA

Product Details

Purpose:	Mouse polyclonal antibody raised against a partial recombinant RRM2.
Immunogen:	RRM2 (NP_001025, 1 a.a. ~ 110 a.a) partial recombinant protein with GST tag.
Sequence:	MLSLRVPLAP ITDPQQLQLS PLKGLSLVDK ENTPPALSGT RVLASKTARR IFQEPTPKT KAAAPGVEDE PLLRENPRRF VIFPIEYHDI WQMYKKA EAS FWTAEEVDLS
Cross-Reactivity:	Human
Characteristics:	Antibody Reactive Against Recombinant Protein.

Target Details

Target:	RRM2
Alternative Name:	RRM2 (RRM2 Products)

Target Details

Background:	Full Gene Name: ribonucleotide reductase M2 polypeptide Synonyms: R2,RR2M
Gene ID:	6241
NCBI Accession:	NM_001034
Pathways:	Mitotic G1-G1/S Phases

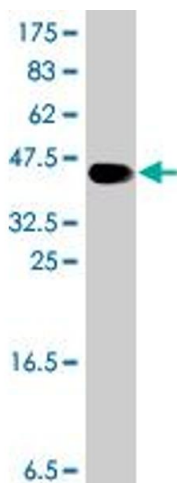
Application Details

Application Notes:	Optimal working dilution should be determined by the investigator.
Restrictions:	For Research Use only

Handling

Format:	Liquid
Buffer:	50 % glycerol
Handling Advice:	Aliquot to avoid repeated freezing and thawing.
Storage:	-20 °C
Storage Comment:	Store at -20°C or lower. Aliquot to avoid repeated freezing and thawing.

Images



Western Blotting

Image 1. Western Blot detection against Immunogen (38.21 kDa).