

Datasheet for ABIN562748
anti-RSC1A1 antibody (AA 1-100)

2 Images

[Go to Product page](#)

Overview

Quantity:	100 µg
Target:	RSC1A1
Binding Specificity:	AA 1-100
Reactivity:	Human
Host:	Mouse
Clonality:	Monoclonal
Conjugate:	This RSC1A1 antibody is un-conjugated
Application:	Western Blotting (WB), ELISA, Immunohistochemistry (Paraffin-embedded Sections) (IHC (p))

Product Details

Purpose:	Mouse monoclonal antibody raised against a partial recombinant RSC1A1.
Immunogen:	RSC1A1 (NP_006502, 1 a.a. ~ 100 a.a) partial recombinant protein with GST tag. MW of the GST tag alone is 26 KDa.
Sequence:	MSSLPTSDGF NHPARSSGQS PDVGNPMSLA RSVSASVCPI KPSDSDRIEP KAVKALKASA EFQLNSEKKE HLSDLSDH ASSADHAPTD QSPAMPMQNS
Clone:	6F9
Isotype:	IgG1
Cross-Reactivity:	Human
Characteristics:	Antibody Reactive Against Recombinant Protein.

Target Details

Target:	RSC1A1
Alternative Name:	RSC1A1 (RSC1A1 Products)
Background:	Full Gene Name: regulatory solute carrier protein, family 1, member 1 Synonyms: RS1
Gene ID:	6248
NCBI Accession:	NM_006511

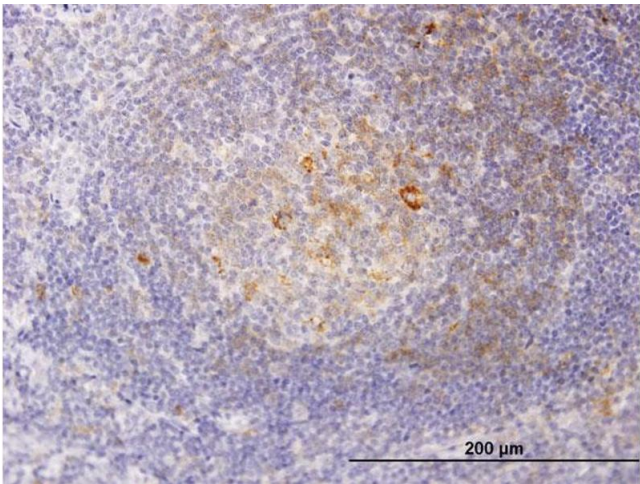
Application Details

Application Notes:	Optimal working dilution should be determined by the investigator.
Restrictions:	For Research Use only

Handling

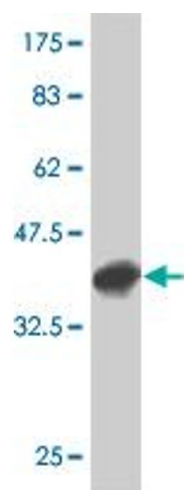
Buffer:	In 1x PBS, pH 7.4
Handling Advice:	Aliquot to avoid repeated freezing and thawing.
Storage:	-20 °C
Storage Comment:	Store at -20°C or lower. Aliquot to avoid repeated freezing and thawing.

Images



Immunostaining

Image 1. Immunoperoxidase of monoclonal antibody to RSC1A1 on formalin-fixed paraffin-embedded human tonsil. [antibody concentration 1.2 ug/ml]



Western Blotting

Image 2. Western Blot detection against Immunogen (36.74 kDa) .