

Datasheet for ABIN562756
anti-S100A1 antibody (AA 1-75)[Go to Product page](#)

1 Image

Overview

Quantity:	50 µL
Target:	S100A1
Binding Specificity:	AA 1-75
Reactivity:	Human
Host:	Mouse
Clonality:	Polyclonal
Conjugate:	This S100A1 antibody is un-conjugated
Application:	Western Blotting (WB), ELISA

Product Details

Purpose:	Mouse polyclonal antibody raised against a partial recombinant S100A1.
Immunogen:	S100A1 (NP_006262, 1 a.a. ~ 75 a.a) partial recombinant protein with GST tag.
Sequence:	MGSELETAME TLINVFHAHS GKEGDKYKLS KKELKELLQT ELSGFLDAQK DVDAVDKVMK ELDENG DGEV DFQEY
Cross-Reactivity:	Human
Characteristics:	Antibody Reactive Against Recombinant Protein.

Target Details

Target:	S100A1
Alternative Name:	S100A1 (S100A1 Products)

Target Details

Background:	Full Gene Name: S100 calcium binding protein A1 Synonyms: S100,S100-alpha,S100A
Gene ID:	6271
NCBI Accession:	NM_006271
Pathways:	Regulation of Muscle Cell Differentiation , Toll-Like Receptors Cascades , S100 Proteins

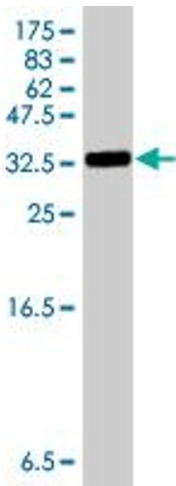
Application Details

Application Notes:	Optimal working dilution should be determined by the investigator.
Restrictions:	For Research Use only

Handling

Format:	Liquid
Buffer:	50 % glycerol
Handling Advice:	Aliquot to avoid repeated freezing and thawing.
Storage:	-20 °C
Storage Comment:	Store at -20°C or lower. Aliquot to avoid repeated freezing and thawing.

Images



Western Blotting

Image 1. Western Blot detection against Immunogen (34.36 KDa) .