

Datasheet for ABIN562766
anti-s100a4 antibody (AA 1-101)



[Go to Product page](#)

1 Image 1 Publication

Overview

Quantity:	50 µL
Target:	s100a4 (S100A4)
Binding Specificity:	AA 1-101
Reactivity:	Human
Host:	Mouse
Clonality:	Polyclonal
Conjugate:	This s100a4 antibody is un-conjugated
Application:	Western Blotting (WB), ELISA

Product Details

Purpose:	Mouse polyclonal antibody raised against a full-length recombinant S100A4.
Immunogen:	S100A4 (AAH16300, 1 a.a. ~ 101 a.a) full-length recombinant protein with GST tag.
Sequence:	MACPLEKALD VMVSTFHKYS GKEGDKFKLN KSELKELLTR ELPSFLGKRT DEAAFQKLMS NLDSNRDNEV DFQEYCVFLS CIAMMCDEFF EGFPDKQPRK K
Cross-Reactivity:	Human
Characteristics:	Antibody Reactive Against Recombinant Protein.

Target Details

Target:	s100a4 (S100A4)
Alternative Name:	S100A4 (S100A4 Products)

Target Details

Background: Full Gene Name: S100 calcium binding protein A4
Synonyms: 18A2,42A,CAPL,FSP1,MTS1,P9KA,PEL98

Gene ID: 6275

Pathways: [S100 Proteins](#)

Application Details

Application Notes: Optimal working dilution should be determined by the investigator.

Restrictions: For Research Use only

Handling

Format: Liquid

Buffer: 50 % glycerol

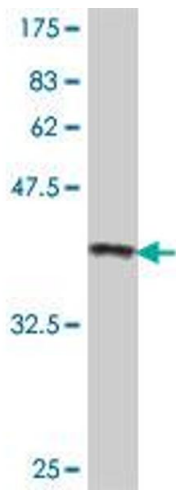
Handling Advice: Aliquot to avoid repeated freezing and thawing.

Storage: -20 °C

Storage Comment: Store at -20°C or lower. Aliquot to avoid repeated freezing and thawing.

Publications

Product cited in: Chen, Wang, Wu, Su, Hong, Chuang, Chen, Hua, Wu, Cha, Babu, Chen, Lee, Chang, Kuo: "CTGF enhances the motility of breast cancer cells via an integrin-alpha_vbeta₃-ERK1/2-dependent S100A4-upregulated pathway." in: **Journal of cell science**, Vol. 120, Issue Pt 12, pp. 2053-65, (2007) ([PubMed](#)).



Western Blotting

Image 1. Western Blot detection against Immunogen (37.22 KDa) .