



[Go to Product page](#)

Datasheet for ABIN562769  
**anti-S100A5 antibody (AA 1-90)**

3 Images

Overview

Quantity:	100 µg
Target:	S100A5
Binding Specificity:	AA 1-90
Reactivity:	Human
Host:	Mouse
Clonality:	Monoclonal
Conjugate:	This S100A5 antibody is un-conjugated
Application:	Western Blotting (WB), ELISA, Immunohistochemistry (Paraffin-embedded Sections) (IHC (p))

Product Details

Purpose:	Mouse monoclonal antibody raised against a partial recombinant S100A5.
Immunogen:	S100A5 (NP_002953, 1 a.a. ~ 90 a.a) partial recombinant protein with GST tag. MW of the GST tag alone is 26 KDa.
Sequence:	MPAAWILWAH SHSELHTVME TPLEKALTTM VTTFHKYSGR EGSKLTLSRK ELKELIKKEL CLGEMKESSI DDLMKSLDKN SDQEIDFKEY
Clone:	5E1
Isotype:	IgG2a
Cross-Reactivity:	Human
Characteristics:	Antibody Reactive Against Recombinant Protein.

## Target Details

Target:	S100A5
Alternative Name:	S100A5 ( <a href="#">S100A5 Products</a> )
Background:	Full Gene Name: S100 calcium binding protein A5 Synonyms: S100D
Gene ID:	6276
NCBI Accession:	<a href="#">NM_002962</a>
Pathways:	<a href="#">S100 Proteins</a>

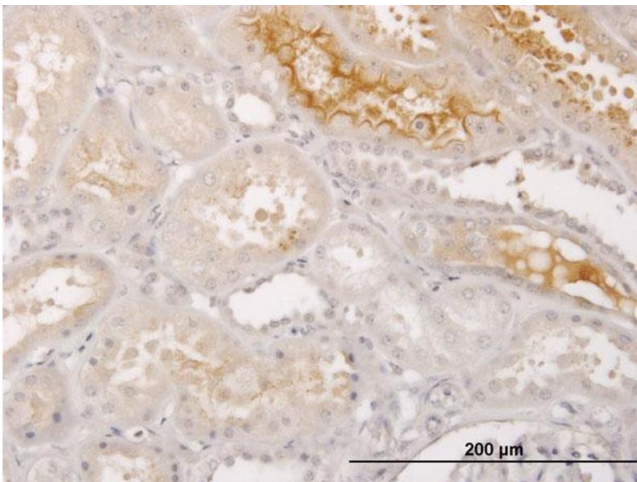
## Application Details

Application Notes:	Optimal working dilution should be determined by the investigator.
Restrictions:	For Research Use only

## Handling

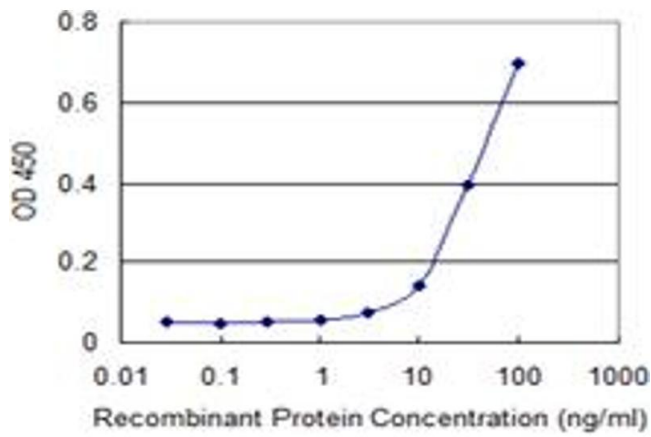
Buffer:	In 1x PBS, pH 7.4
Handling Advice:	Aliquot to avoid repeated freezing and thawing.
Storage:	-20 °C
Storage Comment:	Store at -20°C or lower. Aliquot to avoid repeated freezing and thawing.

## Images



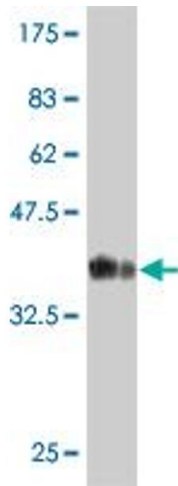
### Immunostaining

**Image 1.** Immunoperoxidase of monoclonal antibody to S100A5 on formalin-fixed paraffin-embedded human kidney. [antibody concentration 1.5 ug/ml]



### ELISA

**Image 2.** Detection limit for recombinant GST tagged S100A5 is 3 ng/ml as a capture antibody.



### Western Blotting

**Image 3.** Western Blot detection against Immunogen (35.64 kDa).