

Datasheet for ABIN562784
anti-S100A10 antibody (AA 1-97)[Go to Product page](#)

4 Images

Overview

Quantity:	100 µg
Target:	S100A10
Binding Specificity:	AA 1-97
Reactivity:	Human
Host:	Mouse
Clonality:	Monoclonal
Conjugate:	This S100A10 antibody is un-conjugated
Application:	Western Blotting (WB), ELISA, Immunofluorescence (IF)

Product Details

Purpose:	Mouse monoclonal antibody raised against a full length recombinant S100A10.
Immunogen:	S100A10 (AAH15973, 1 a.a. ~ 97 a.a) full-length recombinant protein with GST tag. MW of the GST tag alone is 26 KDa.
Sequence:	MPSQMEHAME TMMFTFHKFA GDKGYLTKEG LRVLMKEKEFP GFLENQKDPL AVDKIMKDLD QCRDGKVGFGQ SFFSLIAGLT IACNDYFVVH MKQKGGKK
Clone:	4D2-F1
Isotype:	IgG1
Cross-Reactivity:	Human
Characteristics:	Antibody Reactive Against Recombinant Protein.

Target Details

Target:	S100A10
Alternative Name:	S100A10 (S100A10 Products)
Background:	Full Gene Name: S100 calcium binding protein A10 Synonyms: 42C,ANX2L,ANX2LG,CAL1L,CLP11,Ca[1],GP11,MGC111133,P11,p10
Gene ID:	6281
Pathways:	S100 Proteins

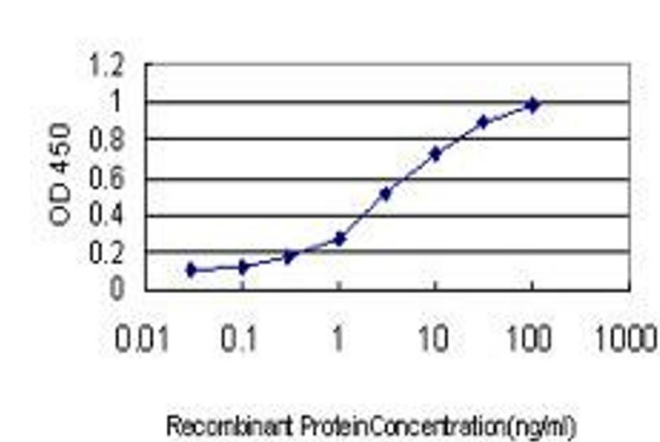
Application Details

Application Notes:	Optimal working dilution should be determined by the investigator.
Restrictions:	For Research Use only

Handling

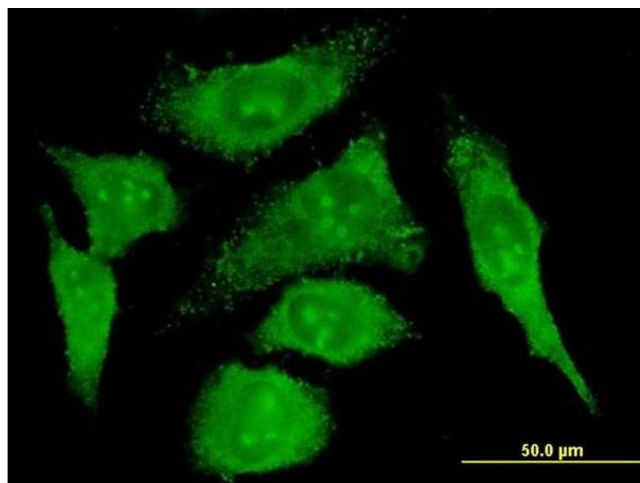
Buffer:	In 1x PBS, pH 7.4
Handling Advice:	Aliquot to avoid repeated freezing and thawing.
Storage:	-20 °C
Storage Comment:	Store at -20°C or lower. Aliquot to avoid repeated freezing and thawing.

Images



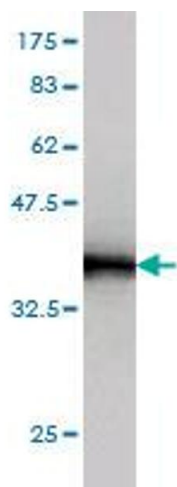
ELISA

Image 1. Detection limit for recombinant GST tagged S100A10 is approximately 0.1ng/ml as a capture antibody.



Immunofluorescence

Image 2. Immunofluorescence of monoclonal antibody to S100A10 on HeLa cell. [antibody concentration 10 ug/ml]



Western Blotting

Image 3. Western Blot detection against Immunogen (36.41 kDa) .

Please check the [product details page](#) for more images. Overall 4 images are available for ABIN562784.