



[Go to Product page](#)

Datasheet for ABIN562787

anti-SAA1 antibody (AA 1-122)

1 Image

Overview

| | |
|----------------------|-------------------------------------|
| Quantity: | 50 µL |
| Target: | SAA1 |
| Binding Specificity: | AA 1-122 |
| Reactivity: | Human |
| Host: | Mouse |
| Clonality: | Polyclonal |
| Conjugate: | This SAA1 antibody is un-conjugated |
| Application: | ELISA, Western Blotting (WB) |

Product Details

| | |
|-------------------|-------------------------------------------------------------------------------------------------------------------------------------------|
| Purpose: | Mouse polyclonal antibody raised against a full-length recombinant SAA1. |
| Immunogen: | SAA1 (AAH07022, 1 a.a. ~ 122 a.a) full-length recombinant protein with GST tag. |
| Sequence: | MKLLTGLVFC SLVLGVSSRS FFSFLGEAFD GARDMWRAYS DMREANYIGS DKYFHARGNY DAAKRGPGGV WAAEAISDAR ENIQRFFGHG AEDSLADQAA DEWGRSGKDP NHFRPAGLPE KY |
| Cross-Reactivity: | Human |
| Characteristics: | Antibody Reactive Against Recombinant Protein. |

Target Details

| | |
|-------------------|----------------------------------------|
| Target: | SAA1 |
| Alternative Name: | SAA1 (SAA1 Products) |

Target Details

Background: Full Gene Name: serum amyloid A1
Synonyms: MGC111216,PIG4,SAA,TP53I4

Gene ID: 6288

Pathways: [Toll-Like Receptors Cascades](#)

Application Details

Application Notes: Optimal working dilution should be determined by the investigator.

Restrictions: For Research Use only

Handling

Format: Liquid

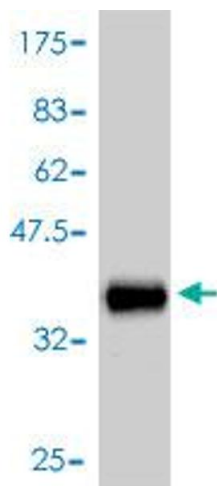
Buffer: 50 % glycerol

Handling Advice: Aliquot to avoid repeated freezing and thawing.

Storage: -20 °C

Storage Comment: Store at -20°C or lower. Aliquot to avoid repeated freezing and thawing.

Images



Western Blotting

Image 1. Western Blot detection against Immunogen (39.53 KDa) .