



Datasheet for ABIN562820
anti-CCL18 antibody (AA 21-89)



[Go to Product page](#)

1 Image

Overview

Quantity:	50 µL
Target:	CCL18
Binding Specificity:	AA 21-89
Reactivity:	Human
Host:	Mouse
Clonality:	Polyclonal
Conjugate:	This CCL18 antibody is un-conjugated
Application:	Western Blotting (WB), ELISA

Product Details

Purpose:	Mouse polyclonal antibody raised against a partial recombinant CCL18.
Immunogen:	CCL18 (NP_002979, 21 a.a. ~ 89 a.a) partial recombinant protein with GST tag.
Sequence:	AQVGTNKELC CLVYTSWQIP QKFIVDYSET SPQCPCPGVI LLTKRGRQIC ADPNKKWVQK YISDLKLNA
Cross-Reactivity:	Human
Characteristics:	Antibody Reactive Against Recombinant Protein.

Target Details

Target:	CCL18
Alternative Name:	CCL18 (CCL18 Products)

Target Details

Background:	Full Gene Name: chemokine (C-C motif) ligand 18 (pulmonary and activation-regulated) Synonyms: AMAC-1,AMAC1,CKb7,DC-CK1,DCCK1,MIP-4,PARC,SCYA18
Gene ID:	6362
NCBI Accession:	NM_002988

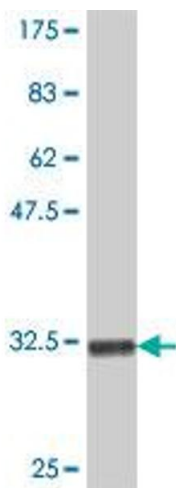
Application Details

Application Notes:	Optimal working dilution should be determined by the investigator.
Restrictions:	For Research Use only

Handling

Format:	Liquid
Buffer:	50 % glycerol
Handling Advice:	Aliquot to avoid repeated freezing and thawing.
Storage:	-20 °C
Storage Comment:	Store at -20°C or lower. Aliquot to avoid repeated freezing and thawing.

Images



Western Blotting

Image 1. Western Blot detection against Immunogen (33.7 KDa) .