



[Go to Product page](#)

Datasheet for ABIN562822

anti-CXCL6 antibody (AA 38-114)

1 Image

Overview

Quantity:	50 µL
Target:	CXCL6
Binding Specificity:	AA 38-114
Reactivity:	Human
Host:	Mouse
Clonality:	Polyclonal
Conjugate:	This CXCL6 antibody is un-conjugated
Application:	ELISA, Western Blotting (WB)

Product Details

Purpose:	Mouse polyclonal antibody raised against a partial recombinant CXCL6.
Immunogen:	CXCL6 (AAH13744, 38 a.a. ~ 114 a.a) partial recombinant protein with GST tag.
Sequence:	GPVSAVLTEL RCTCLRVTLR VNPKTIGKLQ VFPAGPQCSK VEVVASLKNG KQVCLDPEAP FLKKVIQKIL DSGNKKN
Cross-Reactivity:	Human
Characteristics:	Antibody Reactive Against Recombinant Protein.

Target Details

Target:	CXCL6
Alternative Name:	CXCL6 (CXCL6 Products)

Target Details

Background:	Full Gene Name: chemokine (C-X-C motif) ligand 6 (granulocyte chemotactic protein 2) Synonyms: CKA-3,GCP-2,GCP2,SCYB6
Gene ID:	6372

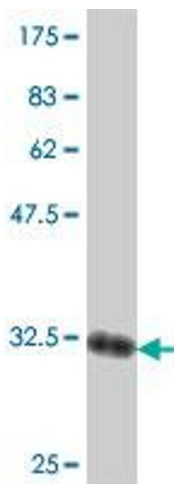
Application Details

Application Notes:	Optimal working dilution should be determined by the investigator.
Restrictions:	For Research Use only

Handling

Format:	Liquid
Buffer:	50 % glycerol
Handling Advice:	Aliquot to avoid repeated freezing and thawing.
Storage:	-20 °C
Storage Comment:	Store at -20°C or lower. Aliquot to avoid repeated freezing and thawing.

Images



Western Blotting

Image 1. Western Blot detection against Immunogen (34.47 kDa).