

Datasheet for ABIN562827
anti-XCL1 antibody (AA 22-114)



[Go to Product page](#)

1 Image

1 Publication

Overview

Quantity:	50 µL
Target:	XCL1
Binding Specificity:	AA 22-114
Reactivity:	Human
Host:	Mouse
Clonality:	Polyclonal
Conjugate:	This XCL1 antibody is un-conjugated
Application:	Western Blotting (WB), ELISA

Product Details

Purpose:	Mouse polyclonal antibody raised against a partial recombinant XCL1.
Immunogen:	XCL1 (NP_002986, 22 a.a. ~ 114 a.a) partial recombinant protein with GST tag.
Sequence:	VGSEVSDKRT CVSLTTQRLP VSRIKTYTIT EGSLRAVIFI TKRGLKVCAD PQATWVRDVV RSMDRKSNTR NNMIQTKPTG TQQSTNTAVT LTG
Cross-Reactivity:	Human
Characteristics:	Antibody Reactive Against Recombinant Protein.

Target Details

Target:	XCL1
Alternative Name:	XCL1 (XCL1 Products)

Target Details

Background:	Full Gene Name: chemokine (C motif) ligand 1 Synonyms: ATAC,LPTN,LTN,SCM-1,SCM-1a,SCM1,SCYC1
Gene ID:	6375
NCBI Accession:	NM_002995
Pathways:	Regulation of Leukocyte Mediated Immunity , Positive Regulation of Immune Effector Process , Production of Molecular Mediator of Immune Response , Activated T Cell Proliferation

Application Details

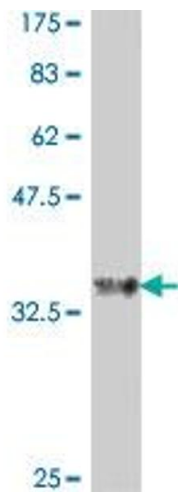
Application Notes:	Optimal working dilution should be determined by the investigator.
Restrictions:	For Research Use only

Handling

Format:	Liquid
Buffer:	50 % glycerol
Handling Advice:	Aliquot to avoid repeated freezing and thawing.
Storage:	-20 °C
Storage Comment:	Store at -20°C or lower. Aliquot to avoid repeated freezing and thawing.

Publications

Product cited in:	Venetz, Ponzoni, Schiraldi, Ferreri, Bertoni, Doglioni, Uguccioni: "Perivascular expression of CXCL9 and CXCL12 in primary central nervous system lymphoma: T-cell infiltration and positioning of malignant B cells." in: International journal of cancer. Journal international du cancer , Vol. 127, Issue 10, pp. 2300-12, (2010) (PubMed).
-------------------	--



Western Blotting

Image 1. Western Blot detection against Immunogen (36.34 kDa) .