

Datasheet for ABIN562832
anti-SDHC antibody (AA 1-169)



[Go to Product page](#)

2 Images

Overview

Quantity:	100 µg
Target:	SDHC
Binding Specificity:	AA 1-169
Reactivity:	Human
Host:	Mouse
Clonality:	Monoclonal
Conjugate:	This SDHC antibody is un-conjugated
Application:	Western Blotting (WB), ELISA, Immunohistochemistry (Paraffin-embedded Sections) (IHC (p))

Product Details

Purpose:	Mouse monoclonal antibody raised against a full length recombinant SDHC.
Immunogen:	SDHC (AAH33626, 1 a.a. ~ 169 a.a) full-length recombinant protein with GST tag. MW of the GST tag alone is 26 KDa.
Sequence:	MAALLLRHVG RHCLRAHFSP QLCIRNAVPL GTTAKEEMER FWNKNIGSNR PLSPHITIYS WSLPMAMSI HRGTGIALSA GVSLFGMSAL LLPGNFESYL ELVKSLLCLGP ALIHTAKFAL VFPLMYHTWN GIRHLMWDLG KGLKIPQLYQ SGVVVLVLT V LSSMGLAAM
Clone:	3E2
Isotype:	IgG2a
Cross-Reactivity:	Human
Characteristics:	Antibody Reactive Against Recombinant Protein.

Target Details

Target:	SDHC
Alternative Name:	SDHC (SDHC Products)
Background:	Full Gene Name: succinate dehydrogenase complex, subunit C, integral membrane protein, 15 kDa Synonyms: CYB560,CYBL,PGL3,QPS1,SDH3
Gene ID:	6391

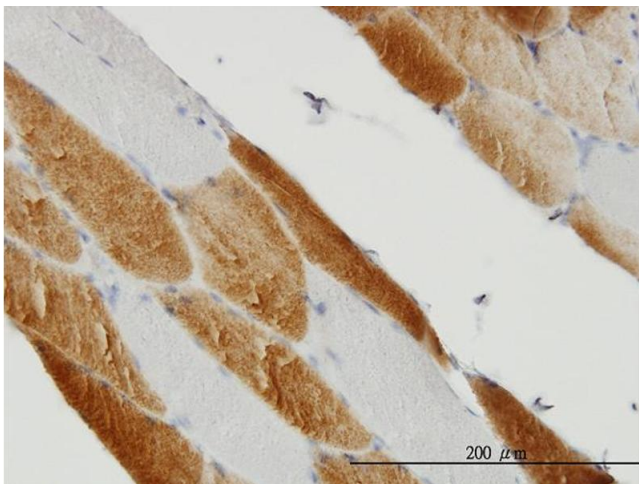
Application Details

Application Notes:	Optimal working dilution should be determined by the investigator.
Restrictions:	For Research Use only

Handling

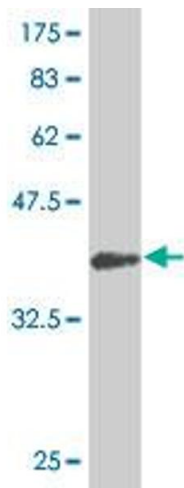
Buffer:	In 1x PBS, pH 7.4
Handling Advice:	Aliquot to avoid repeated freezing and thawing.
Storage:	-20 °C
Storage Comment:	Store at -20°C or lower. Aliquot to avoid repeated freezing and thawing.

Images



Immunostaining

Image 1. Immunoperoxidase of monoclonal antibody to SDHC on formalin-fixed paraffin-embedded human skeletal muscle. [antibody concentration 3 ug/ml]



Western Blotting

Image 2. Western Blot detection against Immunogen (44.33 kDa).