



[Go to Product page](#)

Datasheet for ABIN562840

anti-SFRS6 antibody (AA 1-75)

2 Images

Overview

Quantity:	100 µg
Target:	SFRS6 (SRSF6)
Binding Specificity:	AA 1-75
Reactivity:	Human
Host:	Mouse
Clonality:	Monoclonal
Conjugate:	This SFRS6 antibody is un-conjugated
Application:	Western Blotting (WB), ELISA

Product Details

Purpose:	Mouse monoclonal antibody raised against a partial recombinant SFRS6.
Immunogen:	SFRS6 (NP_006266, 1 a.a. ~ 75 a.a) partial recombinant protein with GST tag. MW of the GST tag alone is 26 KDa.
Sequence:	MPRVYIGRLS YNVREKDIQR FFSGYGRLLLE VDLKNGYGFV EFEDSRDADD AVYELNGKEL CGERVIVEHA RGP RR
Clone:	6A10
Isotype:	IgG3
Cross-Reactivity:	Human
Characteristics:	Antibody Reactive Against Recombinant Protein.

Target Details

Target:	SFRS6 (SRSF6)
Alternative Name:	SFRS6 (SRSF6 Products)
Background:	Full Gene Name: splicing factor, arginine/serine-rich 6 Synonyms: B52,FLJ08061,MGC5045,SRP55
Gene ID:	6431
NCBI Accession:	NM_006275
Pathways:	Ribonucleoprotein Complex Subunit Organization

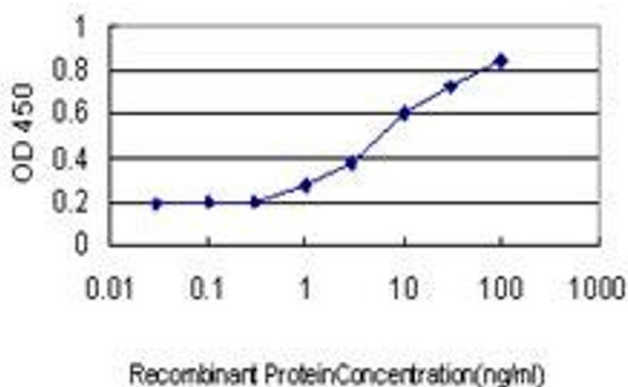
Application Details

Application Notes:	Optimal working dilution should be determined by the investigator.
Restrictions:	For Research Use only

Handling

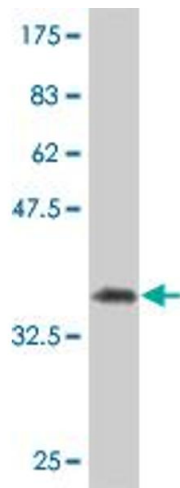
Buffer:	In 1x PBS, pH 7.4
Handling Advice:	Aliquot to avoid repeated freezing and thawing.
Storage:	-20 °C
Storage Comment:	Store at -20°C or lower. Aliquot to avoid repeated freezing and thawing.

Images



ELISA

Image 1. Detection limit for recombinant GST tagged SFRS6 is approximately 1 ng/ml as a capture antibody.



Western Blotting

Image 2. Western Blot detection against Immunogen (33.99 kDa).