



[Go to Product page](#)

Datasheet for ABIN562886
anti-SLC1A2 antibody (AA 160-239)

1 Image

Overview

Quantity:	50 µL
Target:	SLC1A2
Binding Specificity:	AA 160-239
Reactivity:	Human
Host:	Mouse
Clonality:	Polyclonal
Conjugate:	This SLC1A2 antibody is un-conjugated
Application:	Western Blotting (WB), ELISA

Product Details

Purpose:	Mouse polyclonal antibody raised against a partial recombinant SLC1A2.
Immunogen:	SLC1A2 (NP_004162, 160 a.a. ~ 239 a.a) partial recombinant protein with GST tag.
Sequence:	DEVSSLD AFL DLIRNLF PEN LVQACFQQIQ TVTKKVLVAP PPDEEANATS AVVSLNETV TEVPEETKMV IKKGLEFKDG
Cross-Reactivity:	Human
Characteristics:	Antibody Reactive Against Recombinant Protein.

Target Details

Target:	SLC1A2
Alternative Name:	SLC1A2 (SLC1A2 Products)

Target Details

Background:	Full Gene Name: solute carrier family 1 (glial high affinity glutamate transporter), member 2 Synonyms: EAAT2,GLT-1
Gene ID:	6506
NCBI Accession:	NM_004171
Pathways:	Dicarboxylic Acid Transport

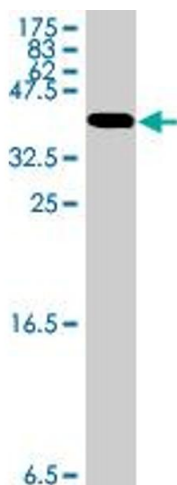
Application Details

Application Notes:	Optimal working dilution should be determined by the investigator.
Restrictions:	For Research Use only

Handling

Format:	Liquid
Buffer:	50 % glycerol
Handling Advice:	Aliquot to avoid repeated freezing and thawing.
Storage:	-20 °C
Storage Comment:	Store at -20°C or lower. Aliquot to avoid repeated freezing and thawing.

Images



Western Blotting

Image 1. Western Blot detection against Immunogen (34.91 KDa) .