

Datasheet for ABIN562888  
**anti-SLC1A6 antibody (AA 500-564)**[Go to Product page](#)

## 1 Image

## Overview

Quantity:	100 µg
Target:	SLC1A6
Binding Specificity:	AA 500-564
Reactivity:	Human
Host:	Mouse
Clonality:	Monoclonal
Conjugate:	This SLC1A6 antibody is un-conjugated
Application:	Western Blotting (WB), ELISA

## Product Details

Purpose:	Mouse monoclonal antibody raised against a partial recombinant SLC1A6.
Immunogen:	SLC1A6 (NP_005062, 500 a.a. ~ 564 a.a) partial recombinant protein with GST tag. MW of the GST tag alone is 26 KDa.
Sequence:	LDRLRTMTNV LGDSIGA AVI EHLSQRELEL QEAE LTLPSL GKPYKSLMAQ EKGASRGRGG NESAM
Clone:	6D9
Isotype:	IgG1
Cross-Reactivity:	Human
Characteristics:	Antibody Reactive Against Recombinant Protein.

## Target Details

Target:	SLC1A6
Alternative Name:	SLC1A6 ( <a href="#">SLC1A6 Products</a> )
Background:	Full Gene Name: solute carrier family 1 (high affinity aspartate/glutamate transporter), member 6 Synonyms: EAAT4,MGC33092,MGC43671
Gene ID:	6511
NCBI Accession:	<a href="#">NM_005071</a>
Pathways:	<a href="#">Dicarboxylic Acid Transport</a>

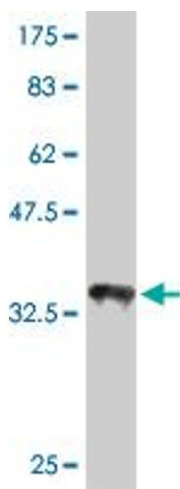
## Application Details

Application Notes:	Optimal working dilution should be determined by the investigator.
Restrictions:	For Research Use only

## Handling

Buffer:	In 1x PBS, pH 7.4
Handling Advice:	Aliquot to avoid repeated freezing and thawing.
Storage:	-20 °C
Storage Comment:	Store at -20°C or lower. Aliquot to avoid repeated freezing and thawing.

## Images



### Western Blotting

**Image 1.** Western Blot detection against Immunogen (32.89 KDa) .