

Datasheet for ABIN562894
anti-SLC9A1 antibody (AA 31-130)

3 Images

[Go to Product page](#)

Overview

Quantity:	100 µg
Target:	SLC9A1
Binding Specificity:	AA 31-130
Reactivity:	Human
Host:	Mouse
Clonality:	Monoclonal
Conjugate:	This SLC9A1 antibody is un-conjugated
Application:	Western Blotting (WB), ELISA, Immunohistochemistry (Paraffin-embedded Sections) (IHC (p))

Product Details

Purpose:	Mouse monoclonal antibody raised against a partial recombinant SLC9A1.
Immunogen:	SLC9A1 (AAH12121, 31 a.a. ~ 130 a.a) partial recombinant protein with GST tag. MW of the GST tag alone is 26 KDa.
Sequence:	VLRSHGLQLS PTASTIRSSE PPRERSIGDV TTAPPEVTPE SRPVNHSVTD HGMKPRKAFF VLGIDYTHVR TPFEISLWIL LACLMKIGFH VIPTISSIVP
Clone:	2F5
Isotype:	IgG1
Cross-Reactivity:	Human
Characteristics:	Antibody Reactive Against Recombinant Protein.

Target Details

Target:	SLC9A1
Alternative Name:	SLC9A1 (SLC9A1 Products)
Background:	Full Gene Name: solute carrier family 9 (sodium/hydrogen exchanger), member 1 Synonyms: APNH,FLJ42224,NHE1
Gene ID:	6548
Pathways:	Glycosaminoglycan Metabolic Process , Proton Transport

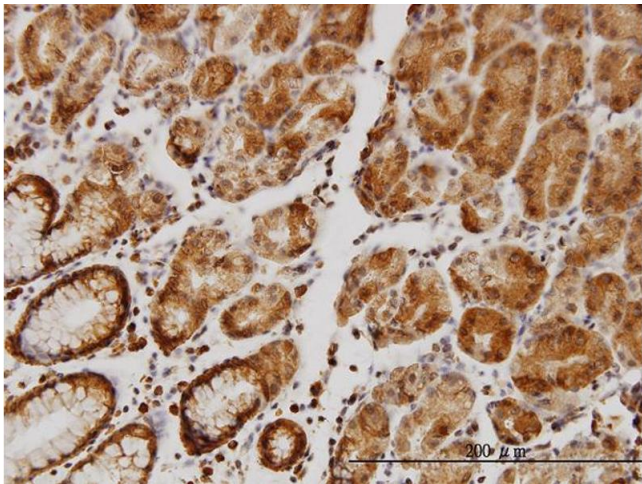
Application Details

Application Notes:	Optimal working dilution should be determined by the investigator.
Restrictions:	For Research Use only

Handling

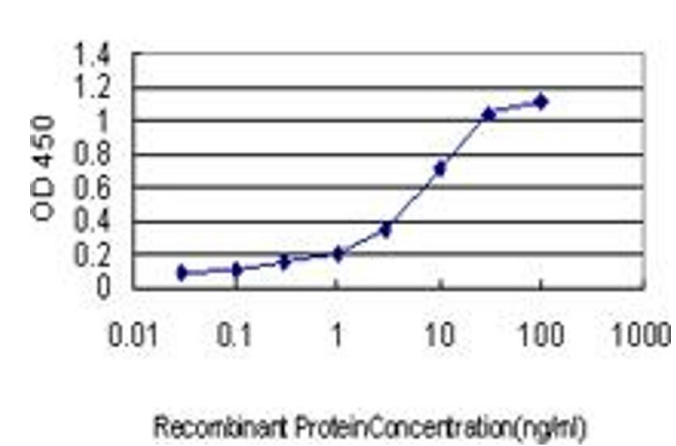
Buffer:	In 1x PBS, pH 7.4
Handling Advice:	Aliquot to avoid repeated freezing and thawing.
Storage:	-20 °C
Storage Comment:	Store at -20°C or lower. Aliquot to avoid repeated freezing and thawing.

Images



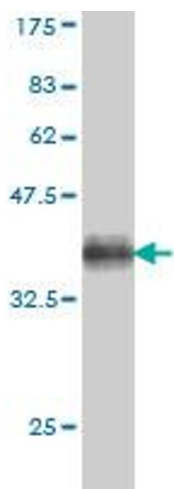
Immunostaining

Image 1. Immunoperoxidase of monoclonal antibody to SLC9A1 on formalin-fixed paraffin-embedded human stomach. [antibody concentration 3 ug/ml]



ELISA

Image 2. Detection limit for recombinant GST tagged SLC9A1 is approximately 0.3ng/ml as a capture antibody.



Western Blotting

Image 3. Western Blot detection against Immunogen (36.41 kDa) .