



[Go to Product page](#)

Datasheet for ABIN562895

anti-SLC11A1 antibody (AA 308-350)

3 Images

1 Publication

Overview

Quantity:	100 µg
Target:	SLC11A1
Binding Specificity:	AA 308-350
Reactivity:	Human
Host:	Mouse
Clonality:	Monoclonal
Conjugate:	This SLC11A1 antibody is un-conjugated
Application:	Western Blotting (WB), ELISA

Product Details

Purpose:	Mouse monoclonal antibody raised against a partial recombinant SLC11A1.
Immunogen:	SLC11A1 (NP_000569.2, 308 a.a. ~ 350 a.a) partial recombinant protein with GST tag. MW of the GST tag alone is 26 KDa.
Sequence:	QAFYQKTNQA AFNICANSSL HDYAKIFPMN NATVAVDIYQ GGV
Clone:	2G2
Isotype:	IgG1
Cross-Reactivity:	Human
Characteristics:	Antibody Reactive Against Recombinant Protein.

Target Details

Target:	SLC11A1
Alternative Name:	SLC11A1 (SLC11A1 Products)
Background:	Full Gene Name: solute carrier family 11 (proton-coupled divalent metal ion transporters), member 1 Synonyms: LSH,NRAMP,NRAMP1
Gene ID:	6556
NCBI Accession:	NM_000578
Pathways:	Transition Metal Ion Homeostasis , Production of Molecular Mediator of Immune Response , Protein targeting to Nucleus

Application Details

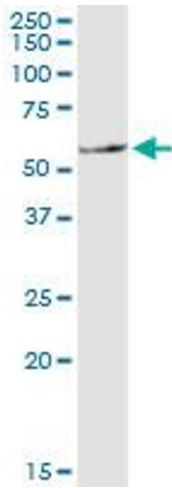
Application Notes:	Optimal working dilution should be determined by the investigator.
Restrictions:	For Research Use only

Handling

Buffer:	In 1x PBS, pH 7.4
Handling Advice:	Aliquot to avoid repeated freezing and thawing.
Storage:	-20 °C
Storage Comment:	Store at -20°C or lower. Aliquot to avoid repeated freezing and thawing.

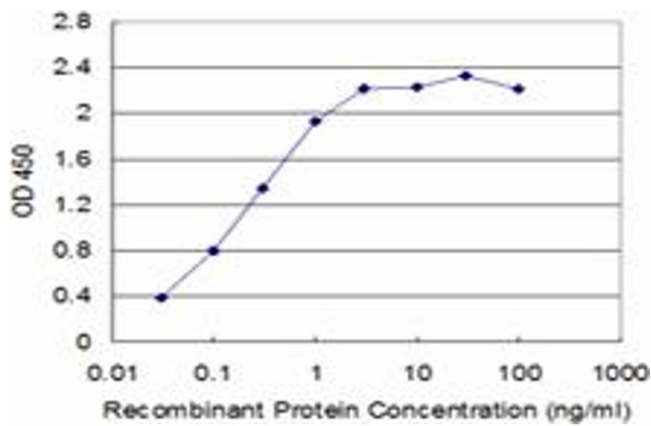
Publications

Product cited in:	Hedges, Kimmel, Snyder, Jerome, Jutila: "Solute carrier 11A1 is expressed by innate lymphocytes and augments their activation." in: Journal of immunology (Baltimore, Md. : 1950) , Vol. 190, Issue 8, pp. 4263-73, (2013) (PubMed).
-------------------	---



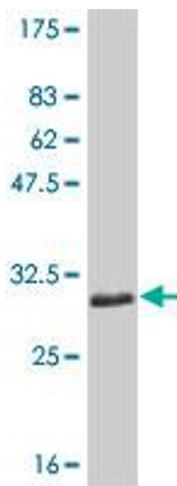
Western Blotting

Image 1. SLC11A1 monoclonal antibody (M01), clone 2G2. Western Blot analysis of SLC11A1 expression in human liver.



ELISA

Image 2. Detection limit for recombinant GST tagged SLC11A1 is approximately 0.03ng/ml as a capture antibody.



Western Blotting

Image 3. Western Blot detection against Immunogen (30.47 KDa) .