

Datasheet for ABIN562913
anti-SMARCC1 antibody (AA 338-437)



[Go to Product page](#)

2 Images

Overview

Quantity:	50 µL
Target:	SMARCC1
Binding Specificity:	AA 338-437
Reactivity:	Human
Host:	Mouse
Clonality:	Polyclonal
Conjugate:	This SMARCC1 antibody is un-conjugated
Application:	Western Blotting (WB), ELISA

Product Details

Purpose:	Mouse polyclonal antibody raised against a partial recombinant SMARCC1.
Immunogen:	SMARCC1 (NP_003065, 338 a.a. ~ 437 a.a) partial recombinant protein with GST tag.
Sequence:	ESRKKGSGKKG QASLYGKRRS QKEEDEQEDL TKDMEDPTPV PNIEEVVLPK NVNLKKDSEN TPVKGGTVAD LDEQDEETVT AGGKEDEDPA KGDQSRSDVL
Cross-Reactivity:	Human
Characteristics:	Antibody Reactive Against Recombinant Protein.

Target Details

Target:	SMARCC1
Alternative Name:	SMARCC1 (SMARCC1 Products)

Target Details

Background:	Full Gene Name: SWI/SNF related, matrix associated, actin dependent regulator of chromatin, subfamily c, member 1 Synonyms: BAF155,CRACC1,Rsc8,SRG3,SWI3
Gene ID:	6599
NCBI Accession:	NM_003074
Pathways:	Chromatin Binding

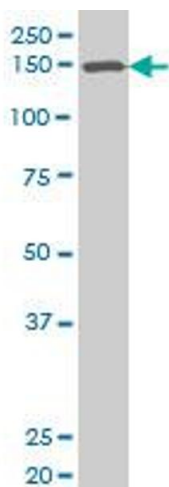
Application Details

Application Notes:	Optimal working dilution should be determined by the investigator.
Restrictions:	For Research Use only

Handling

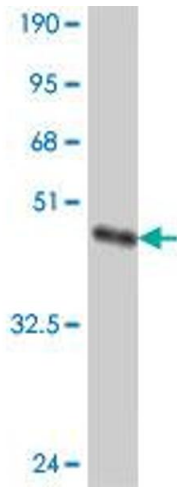
Format:	Liquid
Buffer:	50 % glycerol
Handling Advice:	Aliquot to avoid repeated freezing and thawing.
Storage:	-20 °C
Storage Comment:	Store at -20°C or lower. Aliquot to avoid repeated freezing and thawing.

Images



Western Blotting

Image 1. SMARCC1 polyclonal antibody (A01), Lot # 051012JC01 Western Blot analysis of SMARCC1 expression in SJCRH30 .



Western Blotting

Image 2. Western Blot detection against Immunogen (37.11 KDa).