



Datasheet for ABIN562925
anti-SMS antibody (AA 1-366)



[Go to Product page](#)

3 Images

1 Publication

Overview

Quantity:	100 µg
Target:	SMS
Binding Specificity:	AA 1-366
Reactivity:	Human
Host:	Mouse
Clonality:	Monoclonal
Conjugate:	This SMS antibody is un-conjugated
Application:	Western Blotting (WB), ELISA

Product Details

Purpose:	Mouse monoclonal antibody raised against a full length recombinant SMS.
Immunogen:	SMS (AAH09898.1, 1 a.a. ~ 366 a.a) full-length recombinant protein with GST tag. MW of the GST tag alone is 26 KDa.
Sequence:	MAAARHSTLD FMLGAKADGE TILKGLQSIF QEQGMAESVH TWQDHGYLAT YTNKNGSFAN LRIYPHGLVL LDLQSYDGDA QGKEEIDSIL NKVEERMKEL SQDSTGRVKR LPPIVRGGAI DRYWPTADGR LVEYDIDEVV YDEDSPYQNI KILHSKQFGN ILILSGDVNL AESDLAYTRA IMGSGKEDYT GKDVLLILGGG DGGILCEIVK LKPKMVTMVE IDQMVIDGCK KYMRKTCGDV LDNLKGDCYQ VLIEDCIPVL KRYAKEGREF DYVINDLTAV PISTSPEEDS TWEFLRLILD LSMKVLKQDG KYFTQGNCVN LTEALSLYEE QLGRLYCPVE FSKEIVCVPS YLELWVFYTV WKKAKP
Clone:	1G6

Product Details

Isotype:	IgG2a
Cross-Reactivity:	Human
Characteristics:	Antibody Reactive Against Recombinant Protein.

Target Details

Target:	SMS
Alternative Name:	SMS (SMS Products)
Background:	Full Gene Name: spermine synthase Synonyms: MRSR,SPMSY,SRS,SpS
Gene ID:	6611

Application Details

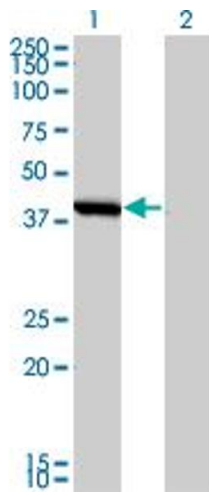
Application Notes:	Optimal working dilution should be determined by the investigator.
Restrictions:	For Research Use only

Handling

Buffer:	In 1x PBS, pH 7.4
Handling Advice:	Aliquot to avoid repeated freezing and thawing.
Storage:	-20 °C
Storage Comment:	Store at -20°C or lower. Aliquot to avoid repeated freezing and thawing.

Publications

Product cited in:	Zhang, Norris, Kalscheuer, Wood, Wang, Schwartz, Alexov, Van Esch: "A Y328C missense mutation in spermine synthase causes a mild form of Snyder-Robinson syndrome." in: Human molecular genetics , Vol. 22, Issue 18, pp. 3789-97, (2013) (PubMed).
-------------------	--

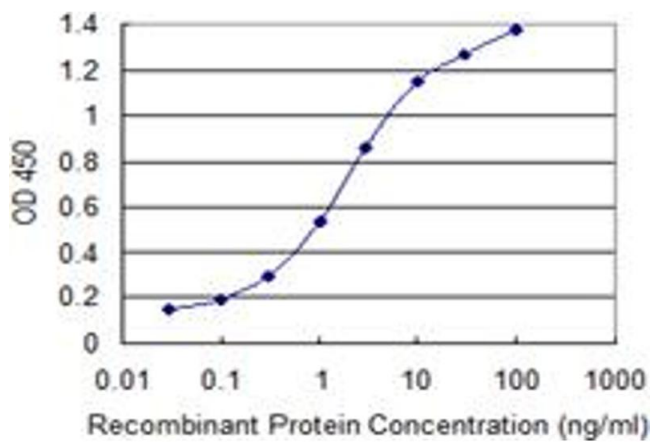


Western Blotting

Image 1. Western Blot analysis of SMS expression in transfected 293T cell line by SMS monoclonal antibody (M01), clone 1G6.

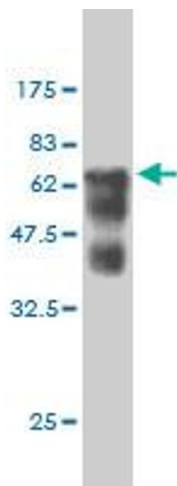
Lane 1: SMS transfected lysate(41.268 KDa).

Lane 2: Non-transfected lysate.



ELISA

Image 2. Detection limit for recombinant GST tagged SMS is 0.03 ng/ml as a capture antibody.



Western Blotting

Image 3. Western Blot detection against Immunogen (66 KDa) .