

Datasheet for ABIN562999

anti-Spermidine Synthase antibody (AA 203-301)[Go to Product page](#)**1** Image

Overview

Quantity:	100 µg
Target:	Spermidine Synthase (SRM)
Binding Specificity:	AA 203-301
Reactivity:	Human
Host:	Mouse
Clonality:	Monoclonal
Conjugate:	This Spermidine Synthase antibody is un-conjugated
Application:	ELISA

Product Details

Purpose:	Mouse monoclonal antibody raised against a partial recombinant SRM.
Immunogen:	SRM (AAH00309, 203 a.a. ~ 301 a.a) partial recombinant protein with GST tag. MW of the GST tag alone is 26 KDa.
Sequence:	LCCQGECQWL HLDLIKEMRQ FCQSLFPVVA YAYCTIPTYP SGQIGFMLCS KNPSTNFPQEP VQPLTQQQVA QMQLKYNSD VHRAAFVLPE FARKALNDV
Clone:	2C1
Isotype:	IgG1
Cross-Reactivity:	Human
Characteristics:	Antibody Reactive Against Recombinant Protein.

Target Details

Target:	Spermidine Synthase (SRM)
Alternative Name:	SRM (SRM Products)
Background:	Full Gene Name: spermidine synthase Synonyms: PAPT,SPDSY,SPS1,SRML1
Gene ID:	6723

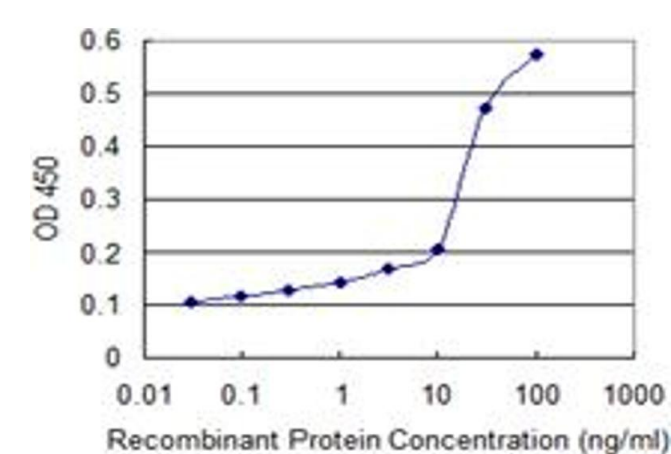
Application Details

Application Notes:	Optimal working dilution should be determined by the investigator.
Restrictions:	For Research Use only

Handling

Buffer:	In 1x PBS, pH 7.4
Handling Advice:	Aliquot to avoid repeated freezing and thawing.
Storage:	-20 °C
Storage Comment:	Store at -20°C or lower. Aliquot to avoid repeated freezing and thawing.

Images



ELISA

Image 1. Detection limit for recombinant GST tagged SRM is 1 ng/ml as a capture antibody.