



[Go to Product page](#)

Datasheet for ABIN563002
anti-SRPK1 antibody (AA 371-470)

3 Images

Overview

Quantity:	100 µg
Target:	SRPK1
Binding Specificity:	AA 371-470
Reactivity:	Human
Host:	Mouse
Clonality:	Monoclonal
Conjugate:	This SRPK1 antibody is un-conjugated
Application:	Western Blotting (WB), ELISA, Immunofluorescence (IF)

Product Details

Purpose:	Mouse monoclonal antibody raised against a partial recombinant SRPK1.
Immunogen:	SRPK1 (AAH38292, 371 a.a. ~ 470 a.a) partial recombinant protein with GST tag. MW of the GST tag alone is 26 KDa.
Sequence:	NETLRHKEDL HNANDCDVQN LNQESSFLSS QNGDSSTSQE TDSCTPITSE VSDTMVCQSS STVGQSFSEQ HISQLQESIR AEIPCEDEQE QEHNGPLDNK
Clone:	2E8
Isotype:	IgG2a
Cross-Reactivity:	Human
Characteristics:	Antibody Reactive Against Recombinant Protein.

Target Details

Target:	SRPK1
Alternative Name:	SRPK1 (SRPK1 Products)
Background:	Full Gene Name: SFRS protein kinase 1 Synonyms: SFRSK1
Gene ID:	6732
Pathways:	Toll-Like Receptors Cascades

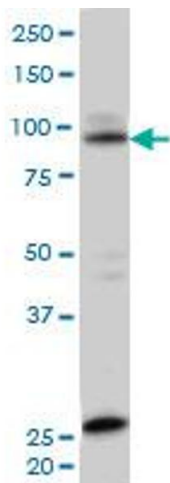
Application Details

Application Notes:	Optimal working dilution should be determined by the investigator.
Restrictions:	For Research Use only

Handling

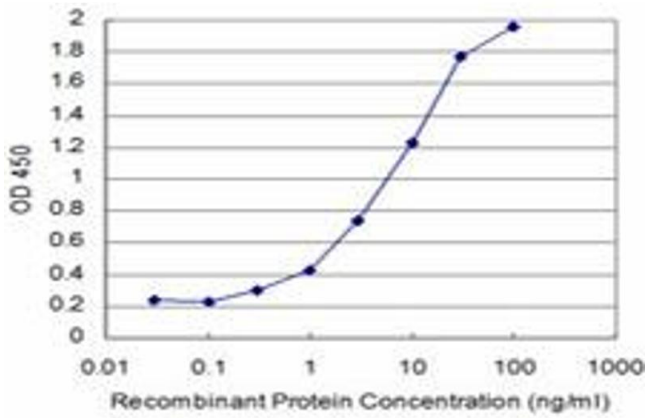
Buffer:	In 1x PBS, pH 7.4
Handling Advice:	Aliquot to avoid repeated freezing and thawing.
Storage:	-20 °C
Storage Comment:	Store at -20°C or lower. Aliquot to avoid repeated freezing and thawing.

Images



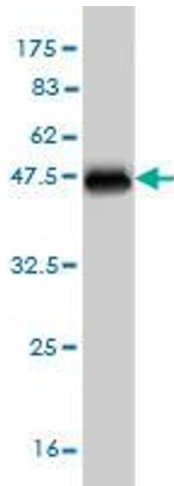
Western Blotting

Image 1. SRPK1 monoclonal antibody (M02), clone 2E8
Western Blot analysis of SRPK1 expression in HeLa .



ELISA

Image 2. Detection limit for recombinant GST tagged SRPK1 is approximately 0.3ng/ml as a capture antibody.



Western Blotting

Image 3. Western Blot detection against Immunogen (36.63 kDa).