

Datasheet for ABIN563007
anti-TROVE2 antibody (AA 1-100)

5 Images

[Go to Product page](#)

Overview

Quantity:	100 µg
Target:	TROVE2
Binding Specificity:	AA 1-100
Reactivity:	Human
Host:	Mouse
Clonality:	Monoclonal
Conjugate:	This TROVE2 antibody is un-conjugated
Application:	Western Blotting (WB), ELISA, Immunofluorescence (IF)

Product Details

Purpose:	Mouse monoclonal antibody raised against a partial recombinant TROVE2.
Immunogen:	TROVE2 (NP_004591, 1 a.a. ~ 100 a.a) partial recombinant protein with GST tag. MW of the GST tag alone is 26 KDa.
Sequence:	MEESVNQMGP LNEKQIANSQ DGYVWQVTDM NRLHRFLCFG SEGTTYIKE QKLGLENAEA LIRLIEDGRG CEVIQEIJSF SQEGRTTKQE PMLFALAICS
Clone:	1F2
Isotype:	IgG2a
Cross-Reactivity:	Human
Characteristics:	Antibody Reactive Against Recombinant Protein.

Target Details

Target:	TROVE2
Alternative Name:	TROVE2 (TROVE2 Products)
Background:	Full Gene Name: TROVE domain family, member 2 Synonyms: RO60,SSA2
Gene ID:	6738
NCBI Accession:	NM_004600

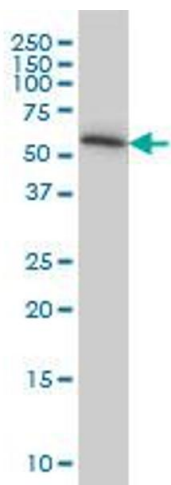
Application Details

Application Notes:	Optimal working dilution should be determined by the investigator.
Restrictions:	For Research Use only

Handling

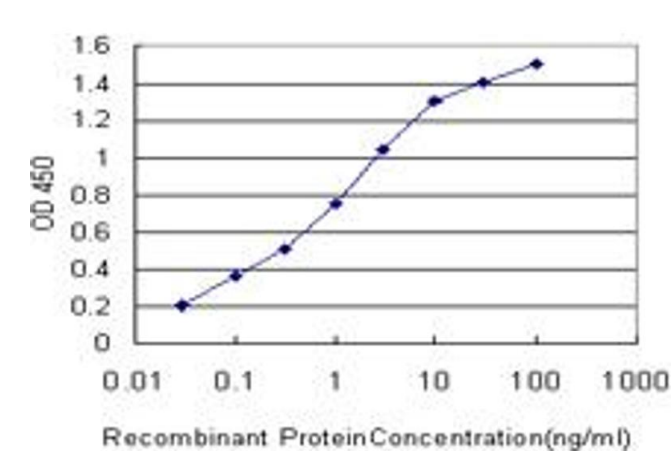
Buffer:	In 1x PBS, pH 7.4
Handling Advice:	Aliquot to avoid repeated freezing and thawing.
Storage:	-20 °C
Storage Comment:	Store at -20°C or lower. Aliquot to avoid repeated freezing and thawing.

Images



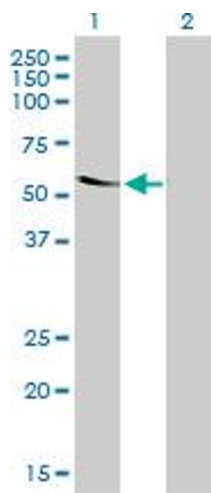
Western Blotting

Image 1. TROVE2 monoclonal antibody (M03), clone 1F2
Western Blot analysis of TROVE2 expression in HeLa .



ELISA

Image 2. Detection limit for recombinant GST tagged TROVE2 is approximately 0.03ng/ml as a capture antibody.



Western Blotting

Image 3. Western Blot analysis of TROVE2 expression in transfected 293T cell line by TROVE2 monoclonal antibody (M03), clone 1F2.

Lane 1: TROVE2 transfected lysate(60.7 kDa).

Lane 2: Non-transfected lysate.

Please check the [product details page](#) for more images. Overall 5 images are available for ABIN563007.