



Datasheet for ABIN563160  
**anti-TFCP2 antibody (AA 414-502)**



[Go to Product page](#)

3 Images

Overview

Quantity:	100 µg
Target:	TFCP2
Binding Specificity:	AA 414-502
Reactivity:	Human
Host:	Mouse
Clonality:	Monoclonal
Conjugate:	This TFCP2 antibody is un-conjugated
Application:	Western Blotting (WB), ELISA

Product Details

Purpose:	Mouse monoclonal antibody raised against a partial recombinant TFCP2.
Immunogen:	TFCP2 (AAH03634, 414 a.a. ~ 502 a.a) partial recombinant protein with GST tag. MW of the GST tag alone is 26 KDa.
Sequence:	KHEDGDSNGT FFVYHAIYLE ELTAVELTEK IAQLFSISPC QISQIYKQGP TGIHVLSIDE MIQNFQEEAC FILD TMKAET NDSYHIILK
Clone:	3H6
Isotype:	IgG2a
Cross-Reactivity:	Human
Characteristics:	Antibody Reactive Against Recombinant Protein.

## Target Details

Target:	TFCP2
Alternative Name:	TFCP2 ( <a href="#">TFCP2 Products</a> )
Background:	Full Gene Name: transcription factor CP2 Synonyms: CP2,LBP-1C,LSF,SEF,TFCP2C
Gene ID:	7024

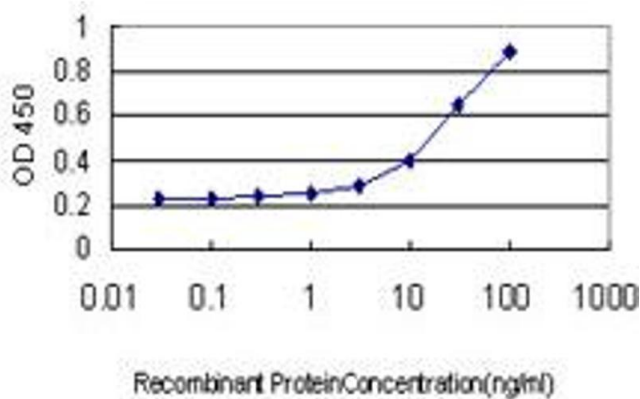
## Application Details

Application Notes:	Optimal working dilution should be determined by the investigator.
Restrictions:	For Research Use only

## Handling

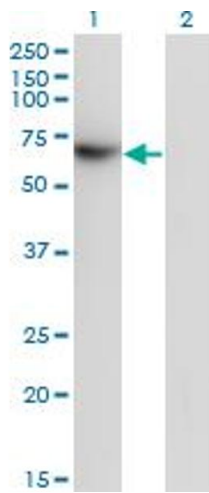
Buffer:	In 1x PBS, pH 7.4
Handling Advice:	Aliquot to avoid repeated freezing and thawing.
Storage:	-20 °C
Storage Comment:	Store at -20°C or lower. Aliquot to avoid repeated freezing and thawing.

## Images



### ELISA

**Image 1.** Detection limit for recombinant GST tagged TFCP2 is approximately 0.3ng/ml as a capture antibody.

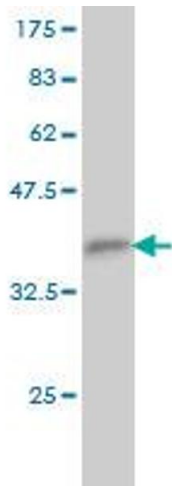


### Western Blotting

**Image 2.** Western Blot analysis of TFCP2 expression in transfected 293T cell line by TFCP2 monoclonal antibody (M01), clone 3H6.

Lane 1: TFCP2 transfected lysate(57.3 KDa).

Lane 2: Non-transfected lysate.



### Western Blotting

**Image 3.** Western Blot detection against Immunogen (35.53 KDa).