



[Go to Product page](#)

Datasheet for ABIN563221

anti-Topoisomerase I antibody (AA 692-765)

1 Image

Overview

Quantity:	50 µL
Target:	Topoisomerase I (TOP1)
Binding Specificity:	AA 692-765
Reactivity:	Human
Host:	Mouse
Clonality:	Polyclonal
Conjugate:	This Topoisomerase I antibody is un-conjugated
Application:	Western Blotting (WB), ELISA

Product Details

Purpose:	Mouse polyclonal antibody raised against a partial recombinant TOP1.
Immunogen:	TOP1 (NP_003277, 692 a.a. ~ 765 a.a) partial recombinant protein with GST tag.
Sequence:	QRLEEQLMKL EVQATDREEN KQIALGTSKL NYLDPRITVA WCKKWGVPIE KIYNKTQREK FAWAIDMADE DYEF
Cross-Reactivity:	Human
Characteristics:	Antibody Reactive Against Recombinant Protein.

Target Details

Target:	Topoisomerase I (TOP1)
Alternative Name:	TOP1 (TOP1 Products)

Target Details

Target Type:	Viral Protein
Background:	Full Gene Name: topoisomerase (DNA) I Synonyms: TOPI
Gene ID:	7150
NCBI Accession:	NM_003286
Pathways:	Caspase Cascade in Apoptosis , Stem Cell Maintenance

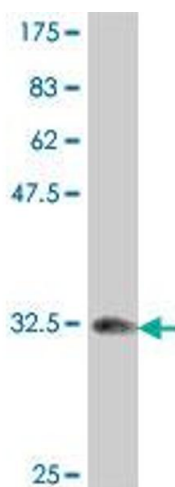
Application Details

Application Notes:	Optimal working dilution should be determined by the investigator.
Restrictions:	For Research Use only

Handling

Format:	Liquid
Buffer:	50 % glycerol
Handling Advice:	Aliquot to avoid repeated freezing and thawing.
Storage:	-20 °C
Storage Comment:	Store at -20°C or lower. Aliquot to avoid repeated freezing and thawing.

Images



Western Blotting

Image 1. Western Blot detection against Immunogen (34.25 KDa) .