



Datasheet for ABIN563252
anti-TRAF1 antibody (AA 1-416)



[Go to Product page](#)

2 Images

Overview

Quantity:	100 µg
Target:	TRAF1
Binding Specificity:	AA 1-416
Reactivity:	Human
Host:	Mouse
Clonality:	Monoclonal
Conjugate:	This TRAF1 antibody is un-conjugated
Application:	Western Blotting (WB), ELISA, Proximity Ligation Assay (PLA)

Product Details

Purpose:	Mouse monoclonal antibody raised against a full length recombinant TRAF1.
Immunogen:	TRAF1 (AAH24145, 1 a.a. ~ 416 a.a) full-length recombinant protein with GST tag. MW of the GST tag alone is 26 KDa.
Sequence:	MASSSGSSPR PAPPDENEFFP GCPPTVCQDP KEPRALCCAG CLSENPRNGE DQICPKCRGE DLQISIPGSR LRTQEKAHPE VAEAGIGCPF AGVGCSEFKGS PQSVQEHEVT SQTSHLNLLL GFMKQWKARL GCGLESGPMA LEQNLSDLQL QAAVEVAGDL EVDCYRAPCS ESQEELALQH FMKEKLLAEL EGKLRVFENI VAVLNKEVEA SHLALATSIH QSQLDRERIL SLEQRVVELQ QTLAQKDQAL GKLEQSLRLM EEASFDGTFL WKITNVTRRC HESACGRTVS LFSPAFYTAK YGYKLCRLRY LNGDGTGKRT HLSLFIVIMR GEYDALLPWP FRNKVTFMML DQNNREHAID AFRPDLSSAS FQRPQSETNV ASGCPLFFPL SKLQSPKHAY VKDDTMFLKC IVETST
Clone:	2G9-G10

Product Details

Isotype:	IgG2b
Cross-Reactivity:	Human
Characteristics:	Antibody Reactive Against Recombinant Protein.

Target Details

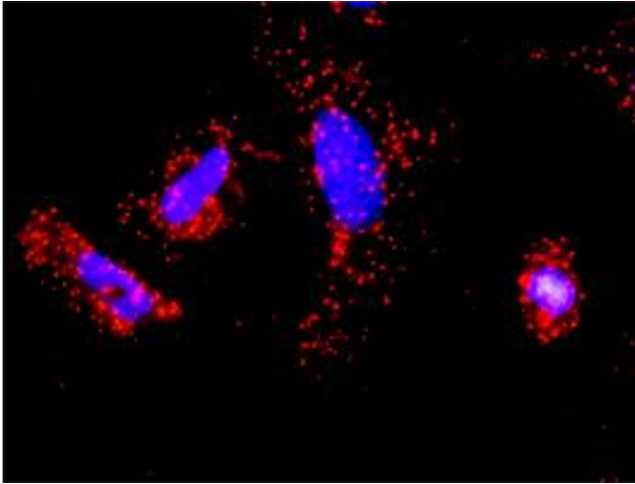
Target:	TRAF1
Alternative Name:	TRAF1 (TRAF1 Products)
Background:	Full Gene Name: TNF receptor-associated factor 1 Synonyms: EBI6,MGC:10353
Gene ID:	7185
Pathways:	NF-kappaB Signaling , Apoptosis , Cell-Cell Junction Organization , Asymmetric Protein Localization

Application Details

Application Notes:	Optimal working dilution should be determined by the investigator.
Restrictions:	For Research Use only

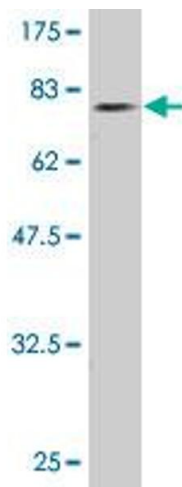
Handling

Buffer:	In 1x PBS, pH 7.4
Handling Advice:	Aliquot to avoid repeated freezing and thawing.
Storage:	-20 °C
Storage Comment:	Store at -20°C or lower. Aliquot to avoid repeated freezing and thawing.



Proximity Ligation Assay

Image 1. Proximity Ligation Analysis of protein-protein interactions between TRAF2 and TRAF1. HeLa cells were stained with anti-TRAF2 rabbit purified polyclonal 1:1200 and anti-TRAF1 mouse monoclonal antibody 1:50. Each red dot represents the detection of protein-protein interaction complex, and nuclei were counterstained with DAPI (blue).



Western Blotting

Image 2. Western Blot detection against Immunogen (71.5 kDa).