



[Go to Product page](#)

Datasheet for ABIN563316
anti-UBE2D2 antibody (AA 1-94)

2 Images

Overview

Quantity:	50 µL
Target:	UBE2D2
Binding Specificity:	AA 1-94
Reactivity:	Human
Host:	Mouse
Clonality:	Polyclonal
Conjugate:	This UBE2D2 antibody is un-conjugated
Application:	Western Blotting (WB), ELISA

Product Details

Purpose:	Mouse polyclonal antibody raised against a partial recombinant UBE2D2.
Immunogen:	UBE2D2 (NP_003330, 1 a.a. ~ 94 a.a) partial recombinant protein with GST tag.
Sequence:	MALKRIHKEL NDLARDPPAQ CSAGPVGDDM FHWQATIMGP NDSPYQGGVF FLTIHFPTDY PFKPPKVAFT TRIYHPNINS NGSICLDILR SQWS
Cross-Reactivity:	Human
Characteristics:	Antibody Reactive Against Recombinant Protein.

Target Details

Target:	UBE2D2
Alternative Name:	UBE2D2 (UBE2D2 Products)

Target Details

Background:	Full Gene Name: ubiquitin-conjugating enzyme E2D 2 (UBC4/5 homolog, yeast) Synonyms: E2(17)KB2,PUBC1,UBC4,UBC4/5,UBCH5B
Gene ID:	7322
NCBI Accession:	NM_003339
Pathways:	Activation of Innate immune Response , Toll-Like Receptors Cascades

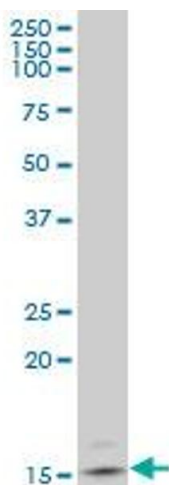
Application Details

Application Notes:	Optimal working dilution should be determined by the investigator.
Restrictions:	For Research Use only

Handling

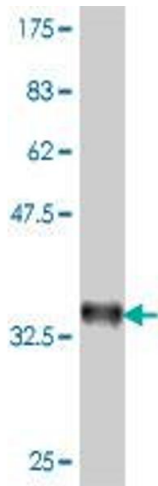
Format:	Liquid
Buffer:	50 % glycerol
Handling Advice:	Aliquot to avoid repeated freezing and thawing.
Storage:	-20 °C
Storage Comment:	Store at -20°C or lower. Aliquot to avoid repeated freezing and thawing.

Images



Western Blotting

Image 1. UBE2D2 polyclonal antibody (A01), Lot # SRP0060302QCS1 Western Blot analysis of UBE2D2 expression in HeLa .



Western Blotting

Image 2. Western Blot detection against Immunogen (36.45 kDa).