



[Go to Product page](#)

Datasheet for ABIN563322

anti-UBE2H antibody (AA 1-183)

5 Images

Overview

Quantity:	100 µg
Target:	UBE2H
Binding Specificity:	AA 1-183
Reactivity:	Human
Host:	Mouse
Clonality:	Monoclonal
Conjugate:	This UBE2H antibody is un-conjugated
Application:	Western Blotting (WB), ELISA, Immunofluorescence (IF)

Product Details

Purpose:	Mouse monoclonal antibody raised against a full length recombinant UBE2H.
Immunogen:	UBE2H (AAH06277, 1 a.a. ~ 183 a.a) full-length recombinant protein with GST tag. MW of the GST tag alone is 26 KDa.
Sequence:	MSSPSPGKRR MDTDVVKLIE SKHEVTILGG LNEFVVKFYG PQGTPYEGGV WKVRVDLPDK YPFKSPSIGF MNKIFHPNID EASGTVCLDV INQWTWALYD LTNIFESFLP QLLAYPNPID PLNGDAAAMY LHRPEEYKQK IKEYIQKYAT EEALKEQEEG TGDSSSESSM SDFSEDEAQD MEL
Clone:	3C4-1A2
Isotype:	IgG2a
Cross-Reactivity:	Human
Characteristics:	Antibody Reactive Against Recombinant Protein.

Target Details

Target:	UBE2H
Alternative Name:	UBE2H (UBE2H Products)
Background:	Full Gene Name: ubiquitin-conjugating enzyme E2H (UBC8 homolog, yeast) Synonyms: E2-20K,UBC8,UBCH,UBCH2
Gene ID:	7328

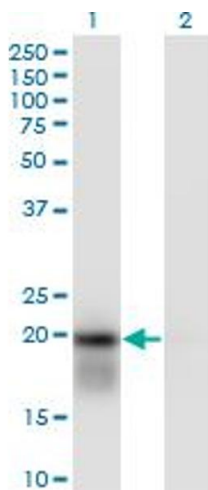
Application Details

Application Notes:	Optimal working dilution should be determined by the investigator.
Restrictions:	For Research Use only

Handling

Buffer:	In 1x PBS, pH 7.4
Handling Advice:	Aliquot to avoid repeated freezing and thawing.
Storage:	-20 °C
Storage Comment:	Store at -20°C or lower. Aliquot to avoid repeated freezing and thawing.

Images

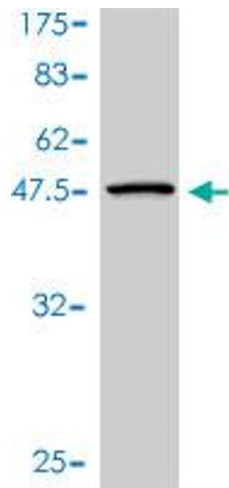


Western Blotting

Image 1. Western Blot analysis of UBE2H expression in transfected 293T cell line by UBE2H monoclonal antibody (M01), clone 3C4-1A2.

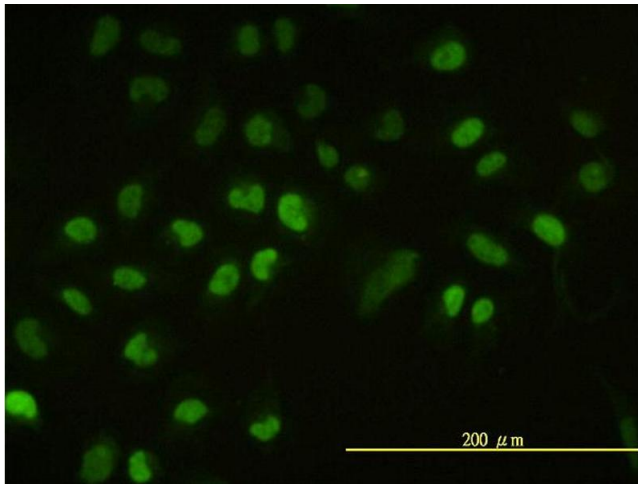
Lane 1: UBE2H transfected lysate(20.7 KDa).

Lane 2: Non-transfected lysate.



Western Blotting

Image 2. Western Blot detection against Immunogen (45.87 KDa).



Immunofluorescence

Image 3. Immunofluorescence of monoclonal antibody to UBE2H on HeLa cell. [antibody concentration 10 ug/ml]

Please check the [product details page](#) for more images. Overall 5 images are available for ABIN563322.