

Datasheet for ABIN5633221
Chicken IgG Isotype Control



[Go to Product page](#)

2 Images

Overview

Quantity:	5 mg
Target:	IgG
Host:	Chicken
Application:	ELISA, Western Blotting (WB), Immunohistochemistry (IHC)

Product Details

Isotype:	IgG
Cross-Reactivity (Details):	Chicken IgG whole molecule assayed by immunoelectrophoresis resulted in a single precipitin arc against anti-Chicken IgG and anti-Chicken Serum.
Purification:	Chicken IgG whole molecule was prepared from normal serum by a multi-step process which includes delipidation, salt fractionation and ion exchange chromatography followed extensive dialysis against the buffer stated above.

Target Details

Target:	IgG
Abstract:	IgG Products
Target Type:	Antibody

Application Details

Application Notes:	Immunohistochemistry Dilution: User Optimized Application Note: Chicken IgG whole molecule can be utilized as a control or standard reagent
--------------------	--

Application Details

in Western Blotting and ELISA experiments.

Western Blot Dilution: User Optimized

ELISA Dilution: User Optimized

Restrictions: For Research Use only

Handling

Format: Lyophilized

Reconstitution: Reconstitution Volume: 500 μ L
Reconstitution Buffer: Restore with deionized water (or equivalent)

Concentration: 10.0 mg/mL

Buffer: Buffer: 0.02 M Potassium Phosphate, 0.15 M Sodium Chloride, pH 7.2
Stabilizer: None

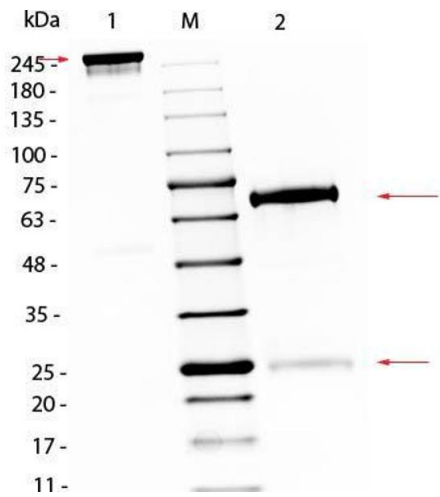
Preservative: Sodium azide

Precaution of Use: This product contains Sodium azide: a POISONOUS AND HAZARDOUS SUBSTANCE which should be handled by trained staff only.

Storage: 4 °C, -20 °C

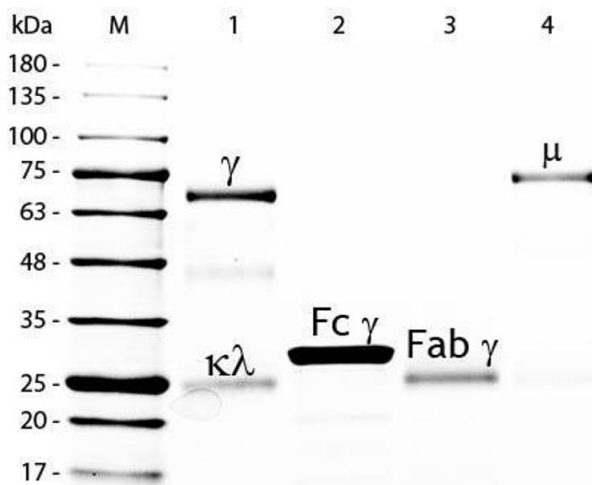
Storage Comment: Store vial at 4° C prior to restoration. Restore with deionized water (or equivalent). For extended storage aliquot contents and freeze at -20° C or below. Avoid cycles of freezing and thawing. Centrifuge product if not completely clear after standing at room temperature. This product is stable for several weeks at 4° C as an undiluted liquid. Dilute only prior to immediate use. Expiration date is one (1) year from date of restoration.

Expiry Date: 12 months



SDS-PAGE

Image 1. SDS PAGE of Chicken IgG Whole Molecule. Lane 1: Non-Reduced Chicken IgG Whole Molecule. Lane 2: 5 µL Opal Prestained Marker . Lane 3: Reduced Chicken IgG Whole Molecule. Load: 1 µg per lane. Predicted/Observed size: Non-Reduced at 160kDa/Observed at 245 kDa; Reduced at 72, 25 kDa. Non-reduced IgG migrates slightly higher.



SDS-PAGE

Image 2. SDS-PAGE of Chicken IgG Whole Molecule . Lane M: 5 µL Opal Prestained Marker . Lane 1: Reduced Chicken IgG Whole Molecule . Lane 2: Reduced Chicken IgG F(c) Fragment . Lane 3: Reduced Chicken IgG Fab Fragment . Lane 4: Reduced Chicken IgM Whole Molecule . Load: 1 µg per lane. Predicted/Observed size: IgG at 72 and 25 kDa; F(c) at 25 kDa; Fab at 25 kDa; IgM at 75 kDa. Observed F(c) Fragment migrates slightly higher. Other bands: Chicken IgG heavy chain alternative splicing variant at approximately 40 kDa in Lane 1.