



[Go to Product page](#)

Datasheet for ABIN563325  
**anti-UBE2N antibody (AA 1-152)**

4 Images

Overview

Quantity:	100 µg
Target:	UBE2N
Binding Specificity:	AA 1-152
Reactivity:	Human
Host:	Mouse
Clonality:	Monoclonal
Conjugate:	This UBE2N antibody is un-conjugated
Application:	Western Blotting (WB), ELISA, Immunofluorescence (IF)

Product Details

Purpose:	Mouse monoclonal antibody raised against a full length recombinant UBE2N.
Immunogen:	UBE2N (AAH03365, 1 a.a. ~ 152 a.a) full-length recombinant protein with GST tag. MW of the GST tag alone is 26 KDa.
Sequence:	MAGLPRRIIK ETQRLLAEPV PGIKAEPDES NARYFHVIA GPQDSPFEGG TFKLELFLPE EYPMAAPKVR FMTKIYHPNV DKLGRICLDI LKDKWSPALQ IRTVLLSIQA LLSAPNPDDP LANDVAEQWK TNEAQAIETA RAWTRLYAMN NI
Clone:	3G1-D10
Isotype:	IgG2b
Cross-Reactivity:	Human
Characteristics:	Antibody Reactive Against Recombinant Protein.

## Target Details

Target:	UBE2N
Alternative Name:	UBE2N ( <a href="#">UBE2N Products</a> )
Background:	Full Gene Name: ubiquitin-conjugating enzyme E2N (UBC13 homolog, yeast) Synonyms: MGC131857,MGC8489,UBC13,UbcH-ben
Gene ID:	7334
Pathways:	<a href="#">TCR Signaling</a> , <a href="#">Fc-epsilon Receptor Signaling Pathway</a> , <a href="#">Activation of Innate immune Response</a> , <a href="#">Toll-Like Receptors Cascades</a> , <a href="#">Positive Regulation of Response to DNA Damage Stimulus</a> , <a href="#">Ubiquitin Proteasome Pathway</a>

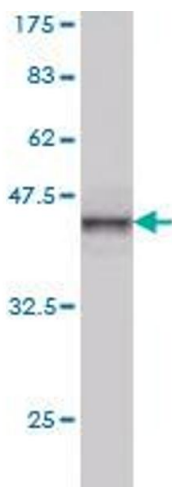
## Application Details

Application Notes:	Optimal working dilution should be determined by the investigator.
Restrictions:	For Research Use only

## Handling

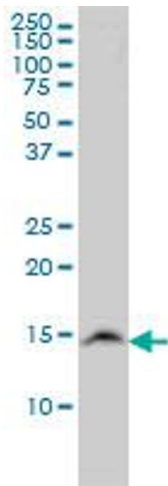
Buffer:	In 1x PBS, pH 7.4
Handling Advice:	Aliquot to avoid repeated freezing and thawing.
Storage:	-20 °C
Storage Comment:	Store at -20°C or lower. Aliquot to avoid repeated freezing and thawing.

## Images



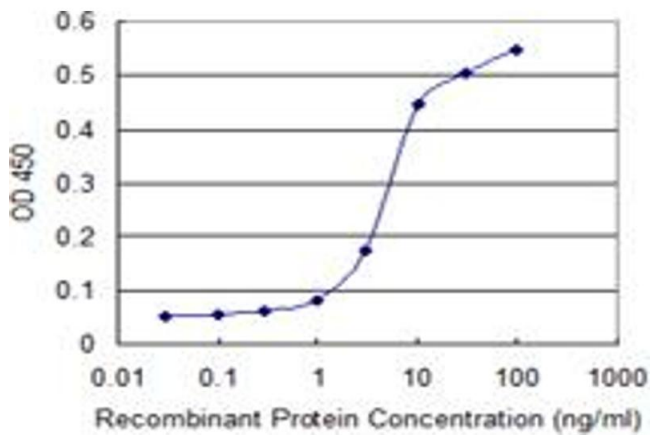
### Western Blotting

**Image 1.** Western Blot detection against Immunogen (42.46 KDa) .



### Western Blotting

**Image 2.** UBE2N monoclonal antibody (M02), clone 3G1-D10 Western Blot analysis of UBE2N expression in LNCaP .



### ELISA

**Image 3.** Detection limit for recombinant GST tagged UBE2N is 0.3 ng/ml as a capture antibody.

Please check the [product details page](#) for more images. Overall 4 images are available for ABIN563325.