

Datasheet for ABIN5633257
Human IgM Isotype Control



[Go to Product page](#)

1 Image

Overview

Quantity:	1 mg
Target:	IgM
Host:	Human
Application:	ELISA, Western Blotting (WB), Immunohistochemistry (IHC)

Product Details

Isotype:	IgM
Cross-Reactivity (Details):	Human IgM (myeloma) whole molecule was assayed by immunoelectrophoresis resulted in a single precipitin arc against anti-Human Serum and anti-Human IgM (μ chain specific). No reaction was observed against anti-Human IgG F(c). Some light chain cross-reactivity will occur with anti-Human IgG.
Purification:	Human IgM (myeloma) whole molecule was prepared from human serum by a multi-step process which includes delipidation, selective precipitation and tandem molecular sieve chromatography followed by extensive dialysis against the buffer stated above.
Sterility:	Sterile filtered

Target Details

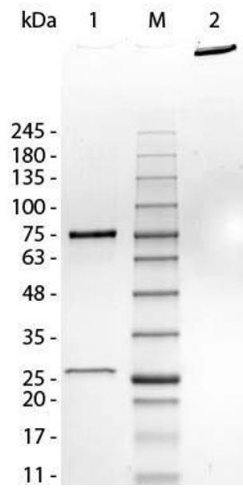
Target:	IgM
Abstract:	IgM Products
Target Type:	Antibody

Application Details

Application Notes:	Immunohistochemistry Dilution: User Optimized Application Note: Human IgM (myeloma) whole molecule can be used as a control or standard in indirect trapping ELISA for quantitation of antigen in serum using a standard curve, for immunoprecipitation and for western blotting. Western Blot Dilution: User Optimized ELISA Dilution: User Optimized
Restrictions:	For Research Use only

Handling

Format:	Liquid
Concentration:	1.1 mg/mL
Buffer:	Buffer: 0.1 M Tris Chloride, 0.5 M Sodium Chloride, pH 8.0 Stabilizer: None
Preservative:	Sodium azide
Precaution of Use:	This product contains Sodium azide: a POISONOUS AND HAZARDOUS SUBSTANCE which should be handled by trained staff only.
Storage:	4 °C,-20 °C
Storage Comment:	Store vial at 4° C prior to opening. This product is stable 4° C as an undiluted liquid. Dilute only prior to immediate use. For extended storage mix with an equal volume of glycerol, aliquot contents and freeze at -20° C or below. Avoid cycles of freezing and thawing.
Expiry Date:	12 months



SDS-PAGE

Image 1. SDS-PAGE of Human IgM Whole Molecule. Lane 1: Human IgM, Reduced. M: Opal Pre-stained Marker (MB-210-0500). Lane 2: Human IgM, Non-Reduced. Load: 1.0 μ g per lane. Predicted/Observed size - Non-Reduced: 900 kDa, Reduced - 75, 25 kDa.