



[Go to Product page](#)

Datasheet for ABIN5633262
anti-CD41, CD61 antibody

4 Images

Overview

Quantity:	0.1 mg
Target:	CD41, CD61
Reactivity:	Human
Host:	Mouse
Clonality:	Monoclonal
Conjugate:	This CD41, CD61 antibody is un-conjugated
Application:	Flow Cytometry (FACS), Immunoprecipitation (IP), Immunocytochemistry (ICC)

Product Details

Immunogen:	Human platelets
Clone:	PAC-1
Isotype:	IgM kappa
Specificity:	The mouse monoclonal antibody PAC-1 recognizes an extracellular activation-induced conformational epitope PAC-1 on CD41/CD61 complex (gpIIb/IIIa), also known as integrin alpha IIb beta 3, a receptor which mediates platelet aggregation.
Cross-Reactivity (Details):	Human
Purification:	Purified by sequential steps of physicochemical fractionation (differential precipitation and solid-phase chromatography methods).
Purity:	> 95 % (by SDS-PAGE)

Target Details

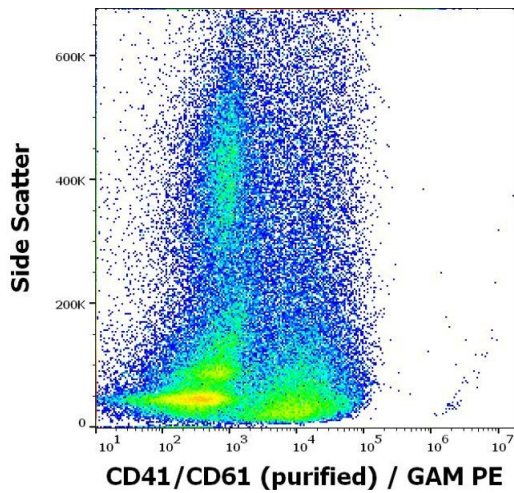
Target:	CD41, CD61
Alternative Name:	CD41/CD61 (CD41, CD61 Products)
Background:	CD41 (platelet glycoprotein IIb, integrin alpha IIb) is composed of two subunits (120 kDa transmembrane alpha chain and 23 kDa extracellular beta chain) and interacts with CD61 (platelet glycoprotein IIIa, integrin beta 3) in the presence of calcium to form a functional adhesive protein receptor. CD41/CD61 complex is one of the earliest markers of the megakaryocytic lineage. Upon blood vessel damage, this receptor binds to a variety of proteins including von Willebrand factor, fibrinogen, fibronectin and vitronectin, and it is involved in platelet aggregation.,platelet GPIIb, Integrin alpha-IIb, GPalpha IIb, GPIIb, GT, GP3A, platelet GPIIIa

Application Details

Application Notes:	Flow cytometry: Recommended dilution: 2-4 µg/mL.
Restrictions:	For Research Use only

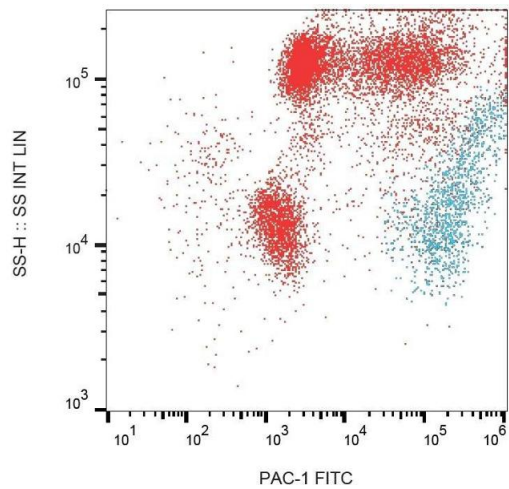
Handling

Concentration:	1 mg/mL
Buffer:	Tris buffered saline (TBS), pH 8.0, 15 mM sodium azide
Preservative:	Sodium azide
Precaution of Use:	This product contains Sodium azide: a POISONOUS AND HAZARDOUS SUBSTANCE which should be handled by trained staff only.
Storage:	4 °C
Storage Comment:	Store at 2-8°C. Do not freeze.



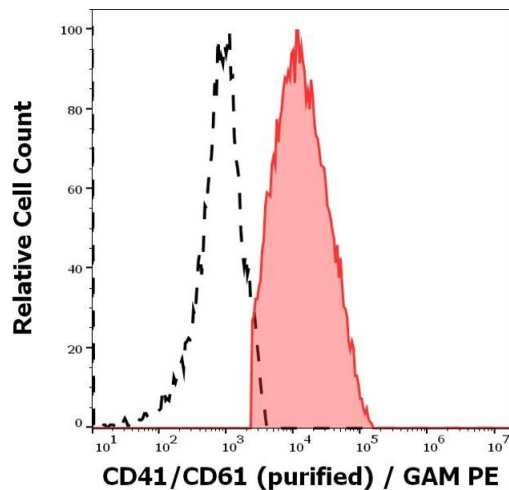
Flow Cytometry

Image 1. Flow cytometry surface staining pattern of PHA stimulated human peripheral whole blood stained using anti-human CD41/CD61 (PAC-1) purified antibody (concentration in sample 8 µg/mL, GAM PE).



Flow Cytometry

Image 2. Surface staining of PAC-1 on PHA-activated (1 hour) human peripheral blood with anti-PAC-1 (PAC-1) FITC.



Flow Cytometry

Image 3. Separation of CD41/CD61 positive platelets (red-filled) from CD41/CD61 negative nucleated cells (black-dashed) in flow cytometry analysis (surface staining) of PHA stimulated human peripheral whole blood stained using anti-human CD41/CD61 (PAC-1) purified antibody (concentration in sample 8 µg/mL, GAM PE).

Please check the [product details page](#) for more images. Overall 4 images are available for ABIN5633262.