



[Go to Product page](#)

Datasheet for ABIN5633263

anti-PD-1 antibody

2 Images

Overview

Quantity:	0.1 mg
Target:	PD-1 (PDCD1)
Reactivity:	Human, Non-Human Primate
Host:	Mouse
Clonality:	Monoclonal
Conjugate:	This PD-1 antibody is un-conjugated
Application:	Flow Cytometry (FACS), Immunohistochemistry (Frozen Sections) (IHC (fro)), Functional Studies (Func)

Product Details

Immunogen:	recombinant human CD279
Clone:	EH12-2H7
Isotype:	IgG1 kappa
Specificity:	The mouse monoclonal antibody EH12.2H7 recognizes an extracellular epitope of CD279 / PD-1 (programmed cell death 1), a 55 kDa type I transmembrane protein expressed above all during T cell development, on activated T cells, activated B cells, and activated monocytes.
Cross-Reactivity (Details):	Human, Non-Human Primates
Purification:	Purified by protein-A affinity chromatography.
Purity:	> 95 % (by SDS-PAGE)
Endotoxin Level:	Endotoxin level is less than 0.01 EU/ μ g of the protein, as determined by the LAL test.

Target Details

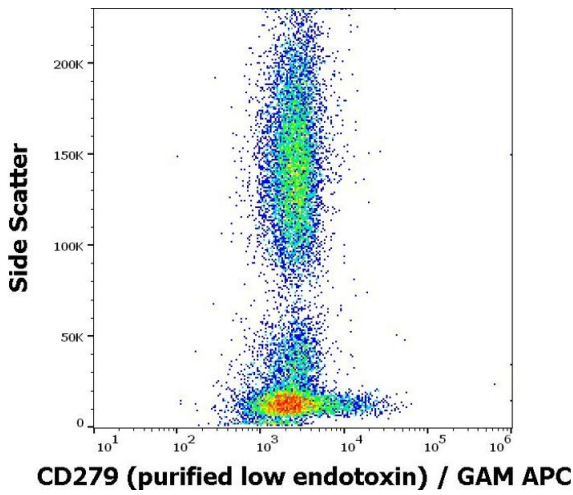
Target:	PD-1 (PDCD1)
Alternative Name:	CD279 / PD-1 (PDCD1 Products)
Background:	Programmed cell death 1,CD279 / PD-1 (programmed cell death 1), a transmembrane protein of CD28/CTLA-4 family. It is expressed inducibly mainly on activated T, B, and myeloid cells and plays a role in maintaining peripheral self-tolerance. Binding to its ligands CD273 and CD274 is associated with inhibition of T cell proliferation and induction of their anergy. It is also expressed during thymic development. Some variants of CD279 are associated with susceptibility to systemic lupus erythematosus, type 1 diabetes, and rheumatoid arthritis.,PDCD1, PD1, SLEB2
Gene ID:	5133
UniProt:	Q15116
Pathways:	Cancer Immune Checkpoints

Application Details

Application Notes:	Functional application: Blocking. Flow cytometry: Recommended dilution: 1-4 µg/mL
Restrictions:	For Research Use only

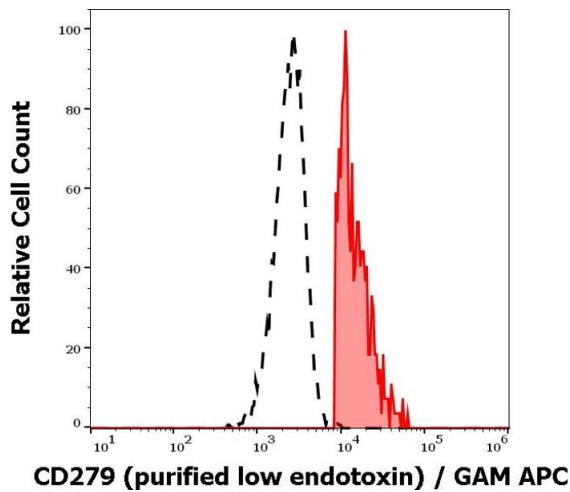
Handling

Concentration:	1 mg/mL
Buffer:	Phosphate buffered saline (PBS), pH 7.4
Preservative:	Azide free
Storage:	4 °C
Storage Comment:	Store at 2-8°C. Do not freeze.



Flow Cytometry

Image 1. Flow cytometry surface staining pattern of human peripheral blood stained using anti-human CD279 (EH12.2H7) purified antibody (low endotoxin, concentration in sample 6 µg/mL) GAM APC.



Flow Cytometry

Image 2. Separation of human CD279 positive lymphocytes (red-filled) from neutrophil granulocytes (black-dashed) in flow cytometry analysis (surface staining) of human peripheral whole blood stained using anti-human CD279 (EH12.2H7) purified antibody (low endotoxin, concentration in sample 6 µg/mL) GAM APC.