

Datasheet for ABIN563337
anti-SLC35A2 antibody (AA 88-156)[Go to Product page](#)

1 Image

Overview

Quantity:	50 µL
Target:	SLC35A2
Binding Specificity:	AA 88-156
Reactivity:	Human
Host:	Mouse
Clonality:	Polyclonal
Conjugate:	This SLC35A2 antibody is un-conjugated
Application:	ELISA, Western Blotting (WB)

Product Details

Purpose:	Mouse polyclonal antibody raised against a partial recombinant SLC35A2.
Immunogen:	SLC35A2 (NP_005651, 88 a.a. ~ 156 a.a) partial recombinant protein with GST tag.
Sequence:	AQKRGNVKHL VFLHEAVLV QYVDTLKLAV PSLIYTLQNN LQYVAISNLP AATFQVTYQL KILTTALFS
Cross-Reactivity:	Human
Characteristics:	Antibody Reactive Against Recombinant Protein.

Target Details

Target:	SLC35A2
Alternative Name:	SLC35A2 (SLC35A2 Products)

Target Details

Background:	Full Gene Name: solute carrier family 35 (UDP-galactose transporter), member A2 Synonyms: UGALT,UGAT,UGT,UGT1,UGT2,UGTL
Gene ID:	7355
NCBI Accession:	NM_005660

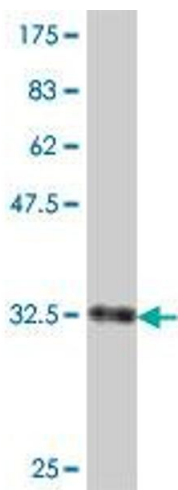
Application Details

Application Notes:	Optimal working dilution should be determined by the investigator.
Restrictions:	For Research Use only

Handling

Format:	Liquid
Buffer:	50 % glycerol
Handling Advice:	Aliquot to avoid repeated freezing and thawing.
Storage:	-20 °C
Storage Comment:	Store at -20°C or lower. Aliquot to avoid repeated freezing and thawing.

Images



Western Blotting

Image 1. Western Blot detection against Immunogen (33.7 KDa) .