



Datasheet for ABIN563383
anti-WEE1 antibody (AA 289-388)



[Go to Product page](#)

1 Image

Overview

Quantity:	50 µL
Target:	WEE1
Binding Specificity:	AA 289-388
Reactivity:	Human
Host:	Mouse
Clonality:	Polyclonal
Conjugate:	This WEE1 antibody is un-conjugated
Application:	Western Blotting (WB), ELISA

Product Details

Purpose:	Mouse polyclonal antibody raised against a partial recombinant WEE1.
Immunogen:	WEE1 (NP_003381, 289 a.a. ~ 388 a.a) partial recombinant protein with GST tag.
Sequence:	SNMKSRYTTE FHELEKIGSG EFGSVFKCVK RLDGCIYAIK RSKKPLAGSV DEQNALREVY AHAVLGQHSH VVRYFSAWAE DDHMLIQNEY CNGGSLADAI
Cross-Reactivity:	Human
Characteristics:	Antibody Reactive Against Recombinant Protein.

Target Details

Target:	WEE1
Alternative Name:	WEE1 (WEE1 Products)

Target Details

Background:	Full Gene Name: WEE1 homolog (S. pombe) Synonyms: DKFZp686I18166,FLJ16446,WEE1A,WEE1hu
Gene ID:	7465
NCBI Accession:	NM_003390
Pathways:	Cell Division Cycle , Mitotic G1-G1/S Phases , M Phase

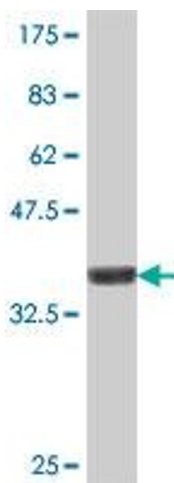
Application Details

Application Notes:	Optimal working dilution should be determined by the investigator.
Restrictions:	For Research Use only

Handling

Format:	Liquid
Buffer:	50 % glycerol
Handling Advice:	Aliquot to avoid repeated freezing and thawing.
Storage:	-20 °C
Storage Comment:	Store at -20°C or lower. Aliquot to avoid repeated freezing and thawing.

Images



Western Blotting

Image 1. Western Blot detection against Immunogen (37.11 KDa) .