

Datasheet for ABIN563400
anti-YWHAB antibody (AA 1-246)



[Go to Product page](#)

1 Image

Overview

| | |
|----------------------|--------------------------------------|
| Quantity: | 50 µL |
| Target: | YWHAB |
| Binding Specificity: | AA 1-246 |
| Reactivity: | Human |
| Host: | Mouse |
| Clonality: | Polyclonal |
| Conjugate: | This YWHAB antibody is un-conjugated |
| Application: | Western Blotting (WB), ELISA |

Product Details

| | |
|-------------------|---|
| Purpose: | Mouse polyclonal antibody raised against a full-length recombinant YWHAB. |
| Immunogen: | YWHAB (AAH01359, 1 a.a. ~ 246 a.a) full-length recombinant protein with GST tag. |
| Sequence: | MTMDKSELVQ KAKLAEQAER YDDMAAAMKA VTEQGHESLN EERNLLSVAY KNVVGARRSS WRVISSIEQK TERNEERQQM GKEYREKIEA ELQDICNDVL ELLDKYLIPN ATQPESKVFY LKMKGDYFRY LSEVASGDNK QTTVSNSQQA YQEAFEISKK EMQPTHPIRL GLALNFSVFY YEILNSPEKA CSLAKTAFDE AIAELDTLNE ESYKDSTLIM QLLRDNLTLW TSENQGDEGD AGEGEN |
| Cross-Reactivity: | Human |
| Characteristics: | Antibody Reactive Against Recombinant Protein. |

Target Details

| | |
|---------|-------|
| Target: | YWHAB |
|---------|-------|

Target Details

| | |
|-------------------|---|
| Alternative Name: | YWHAB (YWHAB Products) |
| Background: | Full Gene Name: tyrosine 3-monooxygenase/tryptophan 5-monooxygenase activation protein, beta polypeptide Synonyms: GW128,HS1,KCIP-1 |
| Gene ID: | 7529 |
| Pathways: | Fc-epsilon Receptor Signaling Pathway , EGFR Signaling Pathway , Neurotrophin Signaling Pathway , Myometrial Relaxation and Contraction , Maintenance of Protein Location |

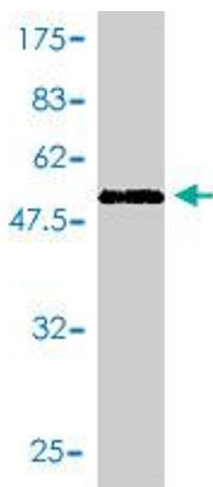
Application Details

| | |
|--------------------|--|
| Application Notes: | Optimal working dilution should be determined by the investigator. |
| Restrictions: | For Research Use only |

Handling

| | |
|------------------|--|
| Format: | Liquid |
| Buffer: | 50 % glycerol |
| Handling Advice: | Aliquot to avoid repeated freezing and thawing. |
| Storage: | -20 °C |
| Storage Comment: | Store at -20°C or lower. Aliquot to avoid repeated freezing and thawing. |

Images



Western Blotting

Image 1. Western Blot detection against Immunogen (53.17 kDa) .