

Datasheet for ABIN563445 anti-ZBTB16 antibody (AA 381-480)



[Go to Product page](#)

3 Images

Overview

Quantity:	100 µg
Target:	ZBTB16
Binding Specificity:	AA 381-480
Reactivity:	Human
Host:	Mouse
Clonality:	Monoclonal
Conjugate:	This ZBTB16 antibody is un-conjugated
Application:	Western Blotting (WB), ELISA, Proximity Ligation Assay (PLA)

Product Details

Purpose:	Mouse monoclonal antibody raised against a partial recombinant ZBTB16.
Immunogen:	ZBTB16 (AAH29812, 381 a.a. ~ 480 a.a) partial recombinant protein with GST tag. MW of the GST tag alone is 26 KDa.
Sequence:	QRELFSKLGE LAVGMKSESR TIGEQCSVCG VELPDNEAVE QHRKLHSGMK TYGCELCGKR FLDSLRLRMH LLAHSAGAKA FVCDQCGAQF SKEDALETHR
Clone:	3A7
Isotype:	IgG2a
Cross-Reactivity:	Human
Characteristics:	Antibody Reactive Against Recombinant Protein.

Target Details

Target:	ZBTB16
Alternative Name:	ZBTB16 (ZBTB16 Products)
Background:	Full Gene Name: zinc finger and BTB domain containing 16 Synonyms: PLZF,ZNF145
Gene ID:	7704
Pathways:	Positive Regulation of fat Cell Differentiation

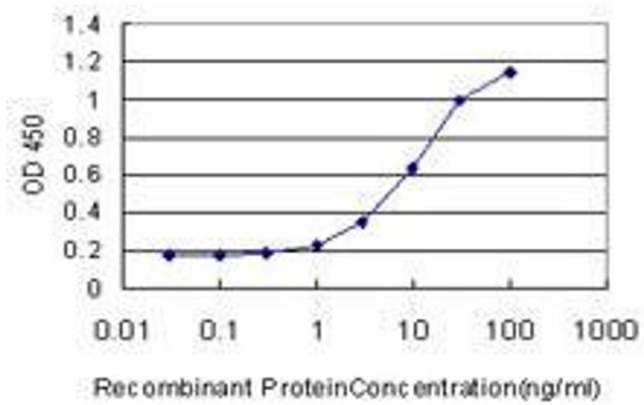
Application Details

Application Notes:	Optimal working dilution should be determined by the investigator.
Restrictions:	For Research Use only

Handling

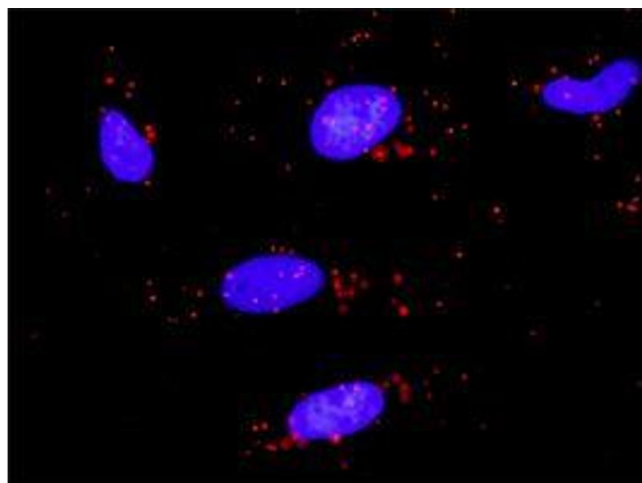
Buffer:	In 1x PBS, pH 7.4
Handling Advice:	Aliquot to avoid repeated freezing and thawing.
Storage:	-20 °C
Storage Comment:	Store at -20°C or lower. Aliquot to avoid repeated freezing and thawing.

Images



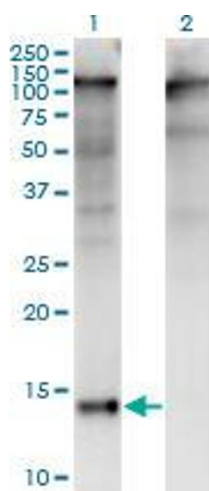
ELISA

Image 1. Detection limit for recombinant GST tagged ZBTB16 is approximately 1ng/ml as a capture antibody.



Proximity Ligation Assay

Image 2. Proximity Ligation Analysis of protein-protein interactions between TRAF2 and ZBTB16. HeLa cells were stained with anti-TRAF2 rabbit purified polyclonal 1:1200 and anti-ZBTB16 mouse monoclonal antibody 1:50. Each red dot represents the detection of protein-protein interaction complex, and nuclei were counterstained with DAPI (blue).



Western Blotting

Image 3. Western Blot analysis of ZBTB16 expression in transfected 293T cell line by ZBTB16 monoclonal antibody (M01), clone 3A7.

Lane 1: ZBTB16 transfected lysate (Predicted MW: 11.11 KDa).

Lane 2: Non-transfected lysate.