



[Go to Product page](#)

Datasheet for ABIN563478  
**anti-BTG2 antibody (AA 59-158)**

2 Images

Overview

Quantity:	100 µg
Target:	BTG2
Binding Specificity:	AA 59-158
Reactivity:	Human
Host:	Mouse
Clonality:	Monoclonal
Conjugate:	This BTG2 antibody is un-conjugated
Application:	Western Blotting (WB), ELISA

Product Details

Purpose:	Mouse monoclonal antibody raised against a partial recombinant BTG2.
Immunogen:	BTG2 (NP_006754, 59 a.a. ~ 158 a.a) partial recombinant protein with GST tag. MW of the GST tag alone is 26 KDa.
Sequence:	PSKGSYRCI RINHKMDPII SRVASQIGLS QPQLHQLLPS ELTLWVDPYE VSYRIGEDGS ICVLYEEAPL AASCGLLTCK NQVLLGRSSP SKNYVMAVSS
Clone:	1A5
Isotype:	IgG1
Cross-Reactivity:	Human
Characteristics:	Antibody Reactive Against Recombinant Protein.

## Target Details

Target:	BTG2
Alternative Name:	BTG2 ( <a href="#">BTG2 Products</a> )
Background:	Full Gene Name: BTG family, member 2 Synonyms: MGC126063,MGC126064,PC3,TIS21
Gene ID:	7832
NCBI Accession:	<a href="#">NM_006763</a>
Pathways:	<a href="#">MAPK Signaling</a>

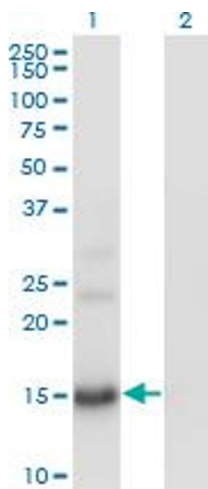
## Application Details

Application Notes:	Optimal working dilution should be determined by the investigator.
Restrictions:	For Research Use only

## Handling

Buffer:	In 1x PBS, pH 7.4
Handling Advice:	Aliquot to avoid repeated freezing and thawing.
Storage:	-20 °C
Storage Comment:	Store at -20°C or lower. Aliquot to avoid repeated freezing and thawing.

## Images

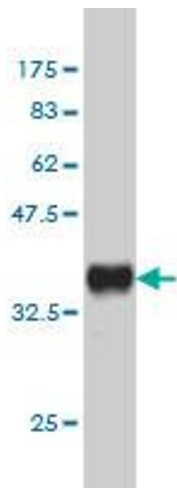


### Western Blotting

**Image 1.** Western Blot analysis of BTG2 expression in transfected 293T cell line by BTG2 monoclonal antibody (M01), clone 1A5.

Lane 1: BTG2 transfected lysate(17.4 KDa).

Lane 2: Non-transfected lysate.



### Western Blotting

**Image 2.** Western Blot detection against Immunogen (36.74 kDa).