

Datasheet for ABIN563496

anti-MAPKAP Kinase 3 antibody (AA 272-382)

6 Images



[Go to Product page](#)

Overview

Quantity:	100 µg
Target:	MAPKAP Kinase 3 (MAPKAPK3)
Binding Specificity:	AA 272-382
Reactivity:	Human
Host:	Mouse
Clonality:	Monoclonal
Conjugate:	This MAPKAP Kinase 3 antibody is un-conjugated
Application:	Western Blotting (WB), ELISA, Immunohistochemistry (Paraffin-embedded Sections) (IHC (p)), Proximity Ligation Assay (PLA)

Product Details

Purpose:	Mouse monoclonal antibody raised against a partial recombinant MAPKAPK3.
Immunogen:	MAPKAPK3 (AAH01662, 272 a.a. ~ 382 a.a) partial recombinant protein with GST tag. MW of the GST tag alone is 26 KDa.
Sequence:	EVSEDAKQLI RLLLKTDPT ERLTITQFMNH PWINQSMVVP QTPLHTARVL QEDKDHWDEV KEEMTSALAT MRVDYDQVKI KDLKTSNNRL LNKRRKKQAG SSSASQGCNN Q
Clone:	2B5
Isotype:	IgG2a
Cross-Reactivity:	Human, Mouse
Characteristics:	Antibody Reactive Against Recombinant Protein.

Target Details

Target:	MAPKAP Kinase 3 (MAPKAPK3)
Alternative Name:	MAPKAPK3 (MAPKAPK3 Products)
Background:	Full Gene Name: mitogen-activated protein kinase-activated protein kinase 3 Synonyms: 3PK,MAPKAP3
Gene ID:	7867
Pathways:	MAPK Signaling , Neurotrophin Signaling Pathway , Activation of Innate immune Response , Toll-Like Receptors Cascades

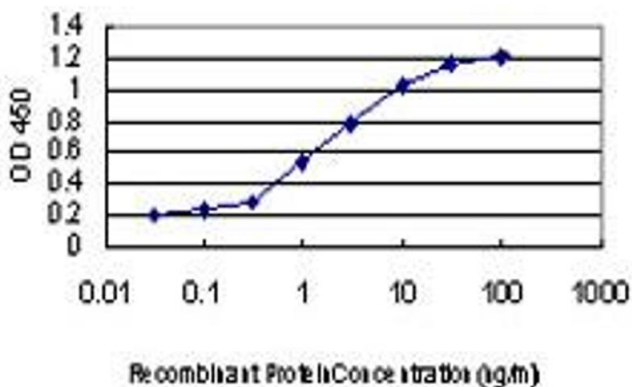
Application Details

Application Notes:	Optimal working dilution should be determined by the investigator.
Restrictions:	For Research Use only

Handling

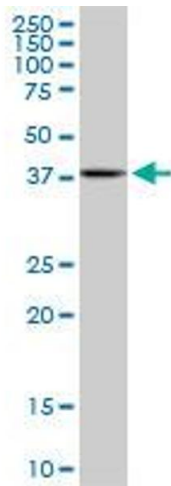
Buffer:	In 1x PBS, pH 7.4
Handling Advice:	Aliquot to avoid repeated freezing and thawing.
Storage:	-20 °C
Storage Comment:	Store at -20°C or lower. Aliquot to avoid repeated freezing and thawing.

Images



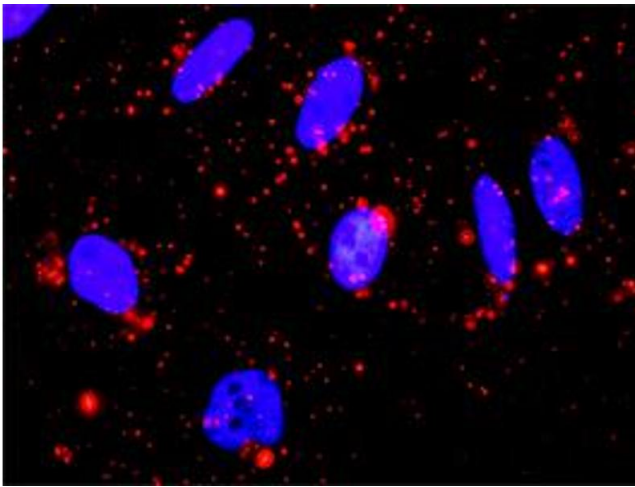
ELISA

Image 1. Detection limit for recombinant GST tagged MAPKAPK3 is approximately 0.03ng/ml as a capture antibody.



Western Blotting

Image 2. MAPKAPK3 monoclonal antibody (M02), clone 2B5. Western Blot analysis of MAPKAPK3 expression in NIH/3T3 .



Proximity Ligation Assay

Image 3. Proximity Ligation Analysis of protein-protein interactions between MAPK13 and MAPKAPK3. HeLa cells were stained with anti-MAPK13 rabbit purified polyclonal 1:1200 and anti-MAPKAPK3 mouse monoclonal antibody 1:50. Each red dot represents the detection of protein-protein interaction complex, and nuclei were counterstained with DAPI (blue).

Please check the [product details page](#) for more images. Overall 6 images are available for ABIN563496.