



[Go to Product page](#)

Datasheet for ABIN563539  
**anti-MLF2 antibody (AA 1-248)**

4 Images

Overview

Quantity:	100 µg
Target:	MLF2
Binding Specificity:	AA 1-248
Reactivity:	Human
Host:	Mouse
Clonality:	Monoclonal
Conjugate:	This MLF2 antibody is un-conjugated
Application:	Western Blotting (WB), ELISA, Immunohistochemistry (Paraffin-embedded Sections) (IHC (p))

Product Details

Purpose:	Mouse monoclonal antibody raised against a full length recombinant MLF2.
Immunogen:	MLF2 (AAH00898, 1 a.a. ~ 248 a.a) full-length recombinant protein with GST tag. MW of the GST tag alone is 26 KDa.
Sequence:	MFRFMRDVEP EDPMFLMDPF AIHRQHMSRM LSGGFGYSPF LSITDGNMPG TRPASRRMQQ AGAVSPFGML GMSGGFMDMF GMMNDMIGNM EHMTAGGNCQ TFSSTVISY SNTGDGAPKV YQETSEMRSA PGGIRETRRT VRDSDSGLEQ MSIGHHIRDR AHILQRSRNH RTGDQEERQD YINLDESEAA AFDDEWRRET SRFRQQRPLE FRRLESSGAG GRRAEPPRL AIQGPEDSPS RQSRRYDW
Clone:	2F6-1E3
Isotype:	IgG1
Cross-Reactivity:	Human

## Product Details

Characteristics: Antibody Reactive Against Recombinant Protein.

## Target Details

Target: MLF2

Alternative Name: MLF2 ([MLF2 Products](#))

Background: Full Gene Name: myeloid leukemia factor 2  
Synonyms: NTN4

Gene ID: 8079

## Application Details

Application Notes: Optimal working dilution should be determined by the investigator.

Restrictions: For Research Use only

## Handling

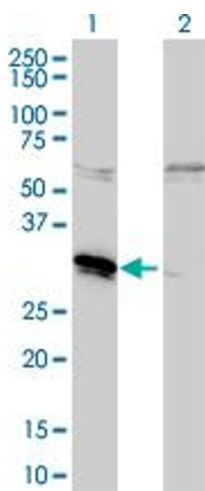
Buffer: In 1x PBS, pH 7.4

Handling Advice: Aliquot to avoid repeated freezing and thawing.

Storage: -20 °C

Storage Comment: Store at -20°C or lower. Aliquot to avoid repeated freezing and thawing.

## Images

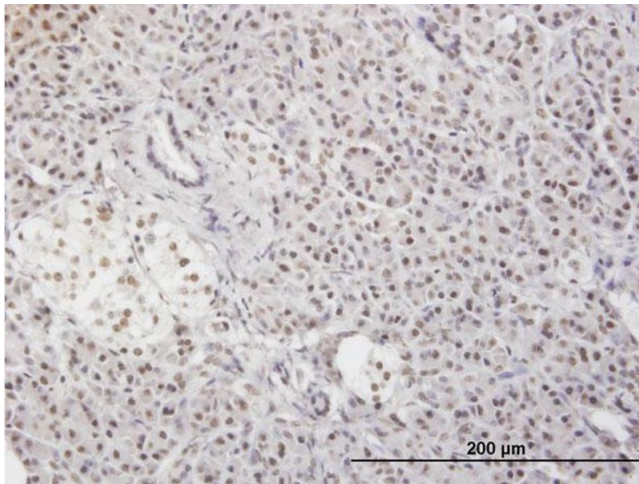


### Western Blotting

**Image 1.** Western Blot analysis of MLF2 expression in transfected 293T cell line by MLF2 monoclonal antibody (M01), clone 2F6-1E3.

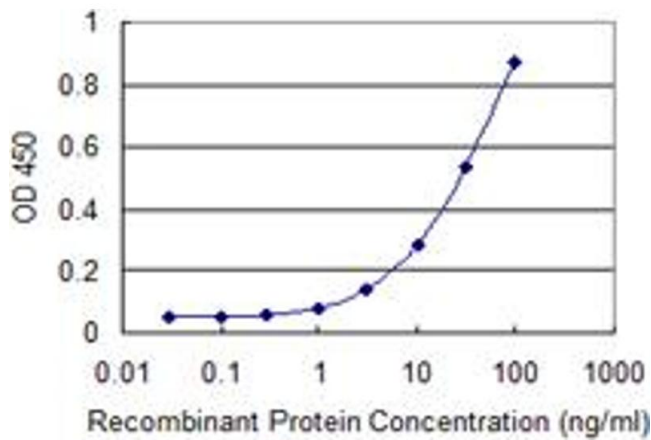
Lane 1: MLF2 transfected lysate(27.28 KDa).

Lane 2: Non-transfected lysate.



### Immunostaining

**Image 2.** Immunoperoxidase of monoclonal antibody to MLF2 on formalin-fixed paraffin-embedded human pancreas. [antibody concentration 3 ug/ml]



### ELISA

**Image 3.** Detection limit for recombinant GST tagged MLF2 is 0.3 ng/ml as a capture antibody.

Please check the [product details page](#) for more images. Overall 4 images are available for ABIN563539.